

Human IgM polyclonal antibody

Catalog: BS90677

Host: Rabbit

Reactivity: Human

BackGround:

Immunoglobulin M (IgM) is the largest circulating antibody molecule in humans. It consists of a heavy chain (μ -chain) and a light chain (κ - or λ -chain), as well as 5 base units and 10 binding sites, though it cannot bind all 10 simultaneously because of steric hindrance. IgM chain C refers to the constant region of the IgM heavy chain that is involved in immune regulation. IgM forms polymers by covalently linking multiple immunoglobulins together with disulfide bonds. It normally exists as a pentamer, but occasionally as a hexamer. Because of its polymeric nature, IgM has high avidity, and it is especially effective at complement activation. Due to its large size, IgM does not diffuse well, and it is found in the interstitium in very low amounts. IgM is mainly found in serum; however, because of the J chain, it is also important as a secretory immunoglobulin. IgM is the first immunoglobulin expressed by mature B cells, and it normally appears early in the course of an infection and does not reappear after further exposure.

Product:

Rabbit IgG, 1mg/ml in PBS with 0.02% sodium azide, 50% glycerol, pH7.2

Molecular Weight:

75 kDa

Swiss-Prot:

P01871(Human)

Purification&Purity:

ProA affinity purified

Applications:

WB:1:1,000-1:5,000

IHC:1:50-1:200

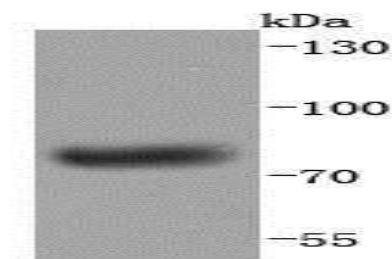
Storage&Stability:

Store at +4 °C after thawing. Aliquot store at -20 °C or -80 °C. Avoid repeated freeze / thaw cycles.

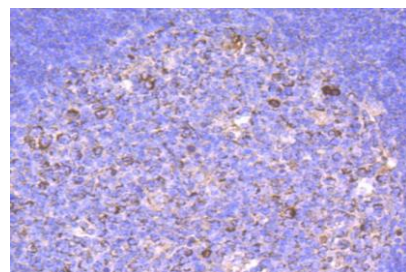
Specificity:

Human IgM polyclonal antibody detects endogenous levels of Human IgM protein.

DATA:



Western blot analysis of Human IgM on human plasma lysates using anti-Human IgM antibody at 1/1,000 dilution.



Immunohistochemical analysis of paraffin-embedded human tonsil tissue using anti-Human IgM antibody. Counter stained with hematoxylin.

Note:

For research use only, not for use in diagnostic procedure.

Bioworld Technology, Inc.

Add: 1660 South Highway 100, Suite 500 St. Louis Park, MN 55416, USA.

Email: info@bioworld.com

Tel: 6123263284

Fax: 6122933841

Bioworld technology, co. Ltd.

Add: No 9, weidi road Qixia District Nanjing, 210046, P. R. China.

Email: info@biogot.com

Tel: 0086-025-68037686

Fax: 0086-025-68035151