

IDH2 polyclonal antibody

Catalog: BS90684

Host: Rabbit

Reactivity: Human, Mouse, Rat

BackGround:

IDH2 (isocitrate dehydrogenase 2 (NADP+), mitochondrial), also designated NADP+-specific ICDH; isocitrate dehydrogenase, mitochondrial; and oxalosuccinate decarboxylase, is a 452 amino acid enzyme encoded by the human gene IDH2. IDH2 belongs to the isocitrate and isopropylmalate dehydrogenases family and contains two nucleotide binding regions. IDH2 is involved in the reduction of NADP+ to NADPH and maintains the supply of glutathione (GSH) in mitochondria. It is believed to play a role in intermediary metabolism and energy production. IDH2 also tightly associates with the pyruvate dehydrogenase complex. IDH2 is found in the mitochondrion as a homodimer and can bind one magnesium or manganese ion per subunit.

Product:

Rabbit IgG, 1mg/ml in PBS with 0.02% sodium azide, 50% glycerol, pH7.2

Molecular Weight:

45 kDa

Swiss-Prot:

P48735(Human) P54071(Mouse) P56574(Rat)

Purification&Purity:

ProA affinity purified

Applications:

WB:1:500-1:2,000

IHC:1:50-1:200

FC:1:50-1:100

Storage&Stability:

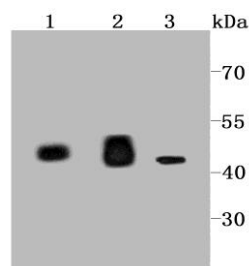
Store at +4 °C after thawing. Aliquot store at -20 °C or

-80 °C. Avoid repeated freeze / thaw cycles.

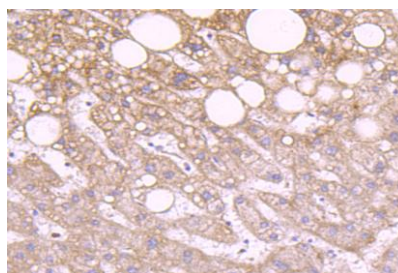
Specificity:

IDH2 polyclonal antibody detects endogenous levels of IDH2 protein.

DATA:



Western blot analysis of IDH2 on different cell lysate using anti-IDH2 antibody at 1/1,000 dilution. Positive control: Line 1: Mouse heart Line 2: Rat heart Line 3: 293T



Immunohistochemical analysis of paraffin-embedded human liver tissue using anti-IDH2 antibody. Counter stained with hematoxylin.

Note:

For research use only, not for use in diagnostic procedure.

Bioworld Technology, Inc.

Add: 1660 South Highway 100, Suite 500 St. Louis Park, MN 55416, USA.

Email: info@bioworld.com

Tel: 6123263284

Fax: 6122933841

Bioworld technology, co. Ltd.

Add: No 9, weidi road Qixia District Nanjing, 210046, P. R. China.

Email: info@biogot.com

Tel: 0086-025-68037686

Fax: 0086-025-68035151