

## IL1 $\beta$ polyclonal antibody

Catalog: BS90705

Host: Rabbit

Reactivity: Human

### BackGround:

Two forms of interleukin-1, designated IL-1 $\alpha$  and IL-1 $\beta$ , have been described. Although encoded by distinct genes and exhibiting roughly only 25% sequence identity, IL-1 $\alpha$  and IL-1 $\beta$  bind to the same receptor and seem to elicit similar biological responses. IL-1 production is generally thought to be associated with inflammation, but it has also been shown to be expressed during kidney development, thymocyte differentiation and cartilage degradation. IL-1 plays a critical role in the regulation of immune response and inflammation, acting as an activator of T and B lymphocytes and natural killer (NK) cells. In T cells, IL-1 stimulates the production of IL-2 and selectively inhibits IL-4 expression. IL-1 induces B cell proliferation and maturation, and immunoglobulin synthesis. NK cells require IL-1 $\beta$  for production of the anti-pathogen IFN- $\gamma$ . IL-1 has also been implicated in several pathological conditions including rheumatoid arthritis, inflammatory bowel disease and atherosclerosis.

### Product:

Rabbit IgG, 1mg/ml in PBS with 0.02% sodium azide, 50% glycerol, pH7.2

### Molecular Weight:

31 kDa

### Swiss-Prot:

P01584(Human)

### Purification&Purity:

ProA affinity purified

### Applications:

WB:1:1,000

ICC:1:50-1:200

IHC:1:50-1:200

FC:1:50-1:100

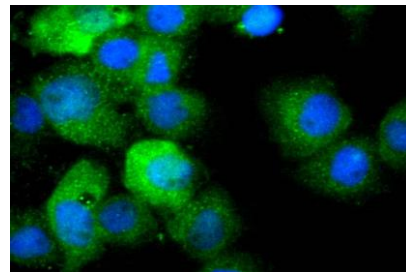
### Storage&Stability:

Store at +4  $^{\circ}$ C after thawing. Aliquot store at -20  $^{\circ}$ C or -80  $^{\circ}$ C. Avoid repeated freeze / thaw cycles.

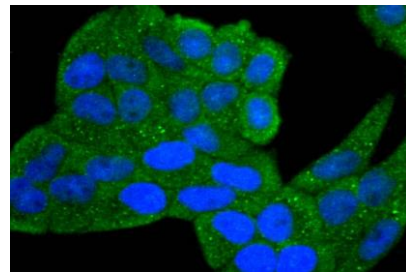
### Specificity:

IL1 $\beta$  polyclonal antibody detects endogenous levels of IL1 $\beta$  protein.

### DATA:



ICC staining IL1 beta in A431 cells (green). The nuclear counter stain is DAPI (blue). Cells were fixed in paraformaldehyde, permeabilised with 0.25% Triton X100/PBS.



ICC staining IL1 beta in HeLa cells (green). The nuclear counter stain is DAPI (blue). Cells were fixed in paraformaldehyde, permeabilised with 0.25% Triton X100/PBS.

### Note:

For research use only, not for use in diagnostic procedure.

### Bioworld Technology, Inc.

Add: 1660 South Highway 100, Suite 500 St. Louis Park, MN 55416, USA.

Email: [info@bioworld.com](mailto:info@bioworld.com)

Tel: 6123263284

Fax: 6122933841

### Bioworld technology, co. Ltd.

Add: No 9, weidi road Qixia District Nanjing, 210046, P. R. China.

Email: [info@biogot.com](mailto:info@biogot.com)

Tel: 0086-025-68037686

Fax: 0086-025-68035151