

INSRR polyclonal antibody

Catalog: BS90716

Host: Rabbit

Reactivity: Human, Mouse, Rat

BackGround:

The insulin receptor (IR) is a heterodimeric protein complex that has an intracellular beta subunit and an extracellular alpha subunit, which is disulfide-linked to a transmembrane segment. Receptor with tyrosine-protein kinase activity. Functions as a pH sensing receptor which is activated by increased extracellular pH. Activates an intracellular signaling pathway that involves IRS1 and AKT1/PKB.

Product:

Rabbit IgG, 1mg/ml in PBS with 0.02% sodium azide, 50% glycerol, pH7.2

Molecular Weight:

80 kDa

Swiss-Prot:

P14616(Human) Q9WTL4(Mouse) Q64716(Rat)

Purification&Purity:

ProA affinity purified

Applications:

WB:1:500

IHC:1:50-1:200

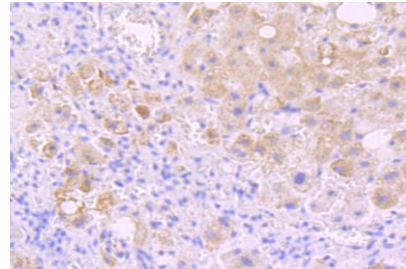
Storage&Stability:

Store at +4 °C after thawing. Aliquot store at -20 °C or -80 °C. Avoid repeated freeze / thaw cycles.

Specificity:

INSRR polyclonal antibody detects endogenous levels of INSRR protein.

DATA:



Immunohistochemical analysis of paraffin-embedded human liver cancer tissue using anti-Insulin Receptor R antibody. Counter stained with hematoxylin.

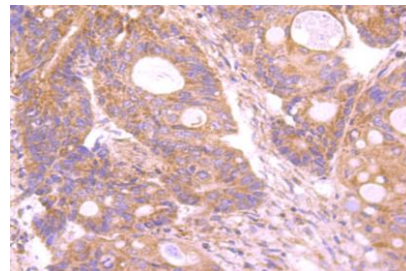


Fig2: Immunohistochemical analysis of paraffin-embedded human colon cancer tissue using anti-Insulin Receptor R antibody. Counter stained with hematoxylin.

Note:

For research use only, not for use in diagnostic procedure.

Bioworld Technology, Inc.

Add: 1660 South Highway 100, Suite 500 St. Louis Park, MN 55416, USA.

Email: info@bioworld.com

Tel: 6123263284

Fax: 6122933841

Bioworld technology, co. Ltd.

Add: No 9, weidi road Qixia District Nanjing, 210046, P. R. China.

Email: info@biogot.com

Tel: 0086-025-68037686

Fax: 0086-025-68035151