

Insulin protease polyclonal antibody

Catalog: BS90717

Host: Rabbit

Reactivity: Human, Mouse, Rat, zebrafish

BackGround:

Insulin degrading enzyme (IDE), also known as insulinase, insulin protease or insulysin, cleaves the peptide hormone insulin with consequences for insulin response and resistance. IDE is a highly conserved thiol metalloprotease with ubiquitous expression including the brain. Since its discovery, IDE has been shown to degrade a variety of bioactive peptides. Recently the finding that IDE clears intracellular and extracellular amyloid products has spurred research into the link between IDE function and human neurodegenerative disease such as Alzheimer's.

Product:

Rabbit IgG, 1mg/ml in PBS with 0.02% sodium azide, 50% glycerol, pH7.2

Molecular Weight:

118 kDa

Swiss-Prot:

P14735(Human) Q9JHR7(Mouse) P35559(Rat)

Purification&Purity:

ProA affinity purified

Applications:

WB:1:1,000-1:2,000

IHC:1:50-1:200

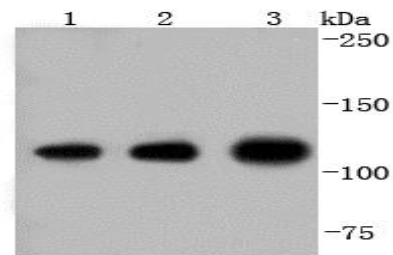
Storage&Stability:

Store at +4 °C after thawing. Aliquot store at -20 °C or -80 °C. Avoid repeated freeze / thaw cycles.

Specificity:

Insulin protease polyclonal antibody detects endogenous levels of Insulin protease protein.

DATA:

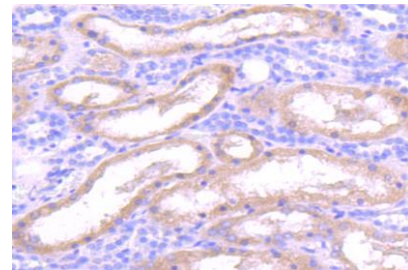


Western blot analysis of Insulin degrading enzyme on different lysates using anti-Insulin degrading enzyme antibody at 1/1,000 dilution. Positive control:

Lane 1: zebrafish

Lane 2: Hela

Lane 3: K562



Immunohistochemical analysis of paraffin-embedded human liver cancer tissue using anti-Insulin degrading enzyme antibody. Counter stained with hematoxylin.

Note:

For research use only, not for use in diagnostic procedure.

Bioworld Technology, Inc.

Add: 1660 South Highway 100, Suite 500 St. Louis Park, MN 55416, USA.

Email: info@bioworld.com

Tel: 6123263284

Fax: 6122933841

Bioworld technology, co. Ltd.

Add: No 9, weidi road Qixia District Nanjing, 210046, P. R. China.

Email: info@biogot.com

Tel: 0086-025-68037686

Fax: 0086-025-68035151