

## Insulin Receptor $\alpha$ polyclonal antibody

Catalog: BS90718

Host: Rabbit

Reactivity: Human, Mouse, Rat

### Background:

The insulin receptor (IR) is a heterodimeric protein complex that has an intracellular  $\beta$  subunit and an extracellular  $\alpha$  subunit, which is disulfide-linked to a transmembrane segment. The insulin ligand binds to the IR and initiates molecular signaling pathways that promote glucose uptake in cells and glycogen synthesis. Insulin binding to IR induces phosphorylation of intracellular tyrosine kinase domains and recruitment of multiple SH2 and SH3 domain-containing intracellular proteins that serve as signaling intermediates for pleiotropic effects of insulin. The human insulin receptor gene maps to chromosome 19p13.3-p13.2 and encodes a 1382 amino acid protein that cleaves to form  $\alpha$  and  $\beta$  subunits. Type 1 diabetes is an auto-immune condition of the endocrine pancreas that results in destruction of insulin secreting cells and a progressive loss in insulin-sensitive glucose uptake by cells. Type 2 diabetes is a condition where cells become resistant to insulin action.

### Product:

Rabbit IgG, 1mg/ml in PBS with 0.02% sodium azide, 50% glycerol, pH7.2

### Molecular Weight:

95 kDa

### Swiss-Prot:

P06213(Human) P15208(Mouse) P15127(Rat)

### Purification&Purity:

ProA affinity purified

### Applications:

WB:1:1,000-1:2,000

ICC:1:100-1:500

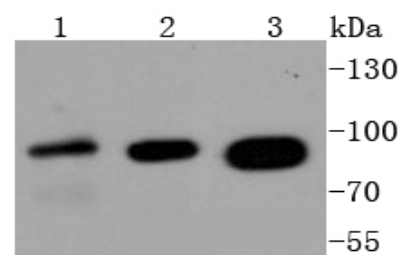
### Storage&Stability:

Store at +4 °C after thawing. Aliquot store at -20 °C or -80 °C. Avoid repeated freeze / thaw cycles.

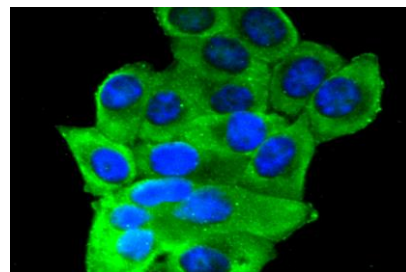
### Specificity:

Insulin Receptor  $\alpha$  polyclonal antibody detects endogenous levels of Insulin Receptor  $\alpha$  protein.

### DATA:



Western blot analysis of Insulin Receptor on different lysates using anti-Insulin Receptor antibody at 1/1,000 dilution. Positive control: Lane 1: 293 Lane 2: MCF-7 Lane 3: Hela



ICC staining Insulin Receptor in HepG2 cells (green). The nuclear counter stain is DAPI (blue). Cells were fixed in paraformaldehyde, permeabilised with 0.25% Triton X100/PBS.

### Note:

For research use only, not for use in diagnostic procedure.

### Bioworld Technology, Inc.

Add: 1660 South Highway 100, Suite 500 St. Louis Park, MN 55416, USA.

Email: [info@bioworld.com](mailto:info@bioworld.com)

Tel: 6123263284

Fax: 6122933841

### Bioworld technology, co. Ltd.

Add: No 9, weidi road Qixia District Nanjing, 210046, P. R. China.

Email: [info@biogot.com](mailto:info@biogot.com)

Tel: 0086-025-68037686

Fax: 0086-025-68035151