

Integrin $\beta 1$ polyclonal antibody

Catalog: BS90724

Host: Rabbit

Reactivity: Human, mouse

BackGround:

Integrins are transmembrane receptors that mediate the attachment between a cell and its surroundings, such as other cells or the extracellular matrix (ECM). Integrins are obligate heterodimers containing two distinct chains, called the α (alpha) and β (beta) subunits. The molecular mass of the integrin subunits can vary from 90 kDa to 160 kDa. Beta subunits have four cysteine-rich repeated sequences. Both α and β subunits bind several divalent cations. Integrins have two main functions: Attachment of the cell to the ECM and signal transduction from the ECM to the cell. However, they are also involved in a wide range of other biological activities, including immune patrolling, cell migration, and binding to cells by certain viruses, such as adenovirus, echovirus, hantavirus, and foot and mouth disease viruses. Research studies have implicated $\beta 1$ integrin in various activities including embryonic development, blood vessel, skin, bone, and muscle formation, as well as tumor metastasis and angiogenesis.

Product:

Rabbit IgG, 1mg/ml in PBS with 0.02% sodium azide, 50% glycerol, pH7.2

Molecular Weight:

100 kDa

Swiss-Prot:

P05556

Purification&Purity:

Peptide affinity purified

Applications:

WB:1:500-1:1,000

FC:1:100

IHC:1:200

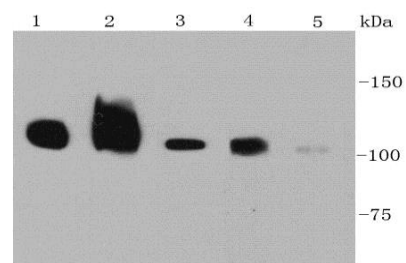
Storage&Stability:

Store at +4 °C after thawing. Aliquot store at -20 °C or -80 °C. Avoid repeated freeze / thaw cycles.

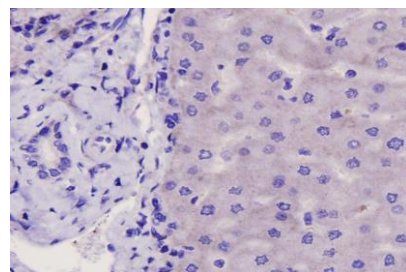
Specificity:

Integrin $\beta 1$ polyclonal antibody detects endogenous levels of Integrin $\beta 1$ protein.

DATA:



Western blot analysis of CD29 on different cell lysates using anti-CD29 antibody at 1/1000 dilution. Positive control: Lane 1: Human liver Lane 2: Human kidney Lane 3: NIH/3T3 Lane 4: A172 Lane 5: Hela



Immunohistochemical analysis of paraffin-embedded human liver carcinoma tissue using anti-CD29 antibody. Counter stained with hematoxylin.

Note:

For research use only, not for use in diagnostic procedure.

Bioworld Technology, Inc.

Add: 1660 South Highway 100, Suite 500 St. Louis Park, MN 55416, USA.

Email: info@bioworld.com

Tel: 6123263284

Fax: 6122933841

Bioworld technology, co. Ltd.

Add: No 9, weidi road Qixia District Nanjing, 210046, P. R. China.

Email: info@biogot.com

Tel: 0086-025-68037686

Fax: 0086-025-68035151