

## Integrin $\beta 3$ polyclonal antibody

Catalog: BS90726

Host: Rabbit

Reactivity: Human, Mouse, Rat

### BackGround:

Integrins are heterodimers composed of noncovalently associated transmembrane  $\alpha$  and  $\beta$  subunits. The 16  $\alpha$  and 8  $\beta$  subunits heterodimerize to produce more than 20 different receptors. Most integrin receptors bind ligands that are components of the extracellular matrix, including Fibronectin, Collagen and Vitronectin. Certain integrins can also bind to soluble ligands such as Fibrinogen, or to counterreceptors on adjacent cells such as the intracellular adhesion molecules (ICAMs), leading to aggregation of cells. Ligands serve to cross-link or cluster integrins by binding to adjacent integrin receptors; both receptor clustering and ligand occupancy are necessary for the activation of integrin-mediated responses. In addition to mediating cell adhesion and cytoskeletal organization, integrins function as signaling receptors. Signals transduced by integrins play a role in many biological processes, including cell growth, differentiation, migration and apoptosis.

### Product:

Rabbit IgG, 1mg/ml in PBS with 0.02% sodium azide, 50% glycerol, pH7.2

### Molecular Weight:

87/110 kDa

### Swiss-Prot:

P05106(Human) O54890(Mouse)

### Purification&Purity:

Peptide affinity purified

### Applications:

WB:1:500-1:1,000

IHC:1:50-1:200

FC:1:50-1:100

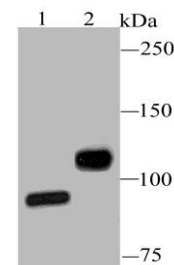
### Storage&Stability:

Store at +4 °C after thawing. Aliquot store at -20 °C or -80 °C. Avoid repeated freeze / thaw cycles.

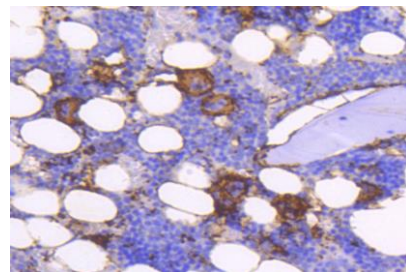
### Specificity:

Integrin  $\beta 3$  polyclonal antibody detects endogenous levels of Integrin  $\beta 3$  protein.

### DATA:



Western blot analysis of Integrin beta-3 on A431 (1) and rat spleen tissue (2) lysate using anti-Integrin beta-3 antibody at 1/1,000 dilution.



Immunohistochemical analysis of paraffin-embedded rat ossature tissue using anti-Integrin beta-3 antibody. Counter stained with hematoxylin.

### Note:

For research use only, not for use in diagnostic procedure.

### Bioworld Technology, Inc.

Add: 1660 South Highway 100, Suite 500 St. Louis Park, MN 55416, USA.

Email: [info@bioworld.com](mailto:info@bioworld.com)

Tel: 6123263284

Fax: 6122933841

### Bioworld technology, co. Ltd.

Add: No 9, weidi road Qixia District Nanjing, 210046, P. R. China.

Email: [info@biogot.com](mailto:info@biogot.com)

Tel: 0086-025-68037686

Fax: 0086-025-68035151