

Involucrin polyclonal antibody

Catalog: BS90730

Host: Rabbit

Reactivity: Human, Rat

BackGround:

Involucrin is a precursor protein of the keratinocyte cornified envelope, which is formed beneath the inner surface of the cell membrane during terminal differentiation. During keratinocyte terminal differentiation, glutamine residues of involucrin become covalently cross-linked to other envelope precursors via covalent epsilon-(gamma-glutamyl) lysine bonds. Moreover, its large size allows involucrin to cross-link molecules that are separated by substantial distances in the cornified envelope. These properties allow a single involucrin molecule to form multiple cross-links, in multiple spatial planes, with other envelope precursors.

Product:

Rabbit IgG, 1mg/ml in PBS with 0.02% sodium azide, 50% glycerol, pH7.2

Molecular Weight:

120 kDa

Swiss-Prot:

P07476(Human) P48998(Rat)

Purification&Purity:

ProA affinity purified

Applications:

WB:1:500-1:2,000

IHC:1:50-1:200

FC:1:50-1:200

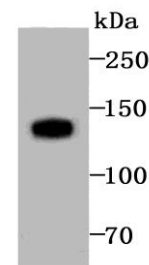
Storage&Stability:

Store at +4 °C after thawing. Aliquot store at -20 °C or -80 °C. Avoid repeated freeze / thaw cycles.

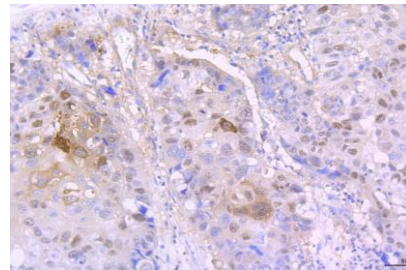
Specificity:

Involucrin polyclonal antibody detects endogenous levels of Involucrin protein.

DATA:



Western blot analysis of Involucrin on human skin tissue lysate using Involucrin antibody at 1/500 dilution.



Immunohistochemical analysis of paraffin-embedded human lung cancer tissue using anti-Involucrin antibody. Counter stained with hematoxylin.

Note:

For research use only, not for use in diagnostic procedure.

Bioworld Technology, Inc.

Add: 1660 South Highway 100, Suite 500 St. Louis Park, MN 55416, USA.

Email: info@bioworld.com

Tel: 6123263284

Fax: 6122933841

Bioworld technology, co. Ltd.

Add: No 9, weidi road Qixia District Nanjing, 210046, P. R. China.

Email: info@biogot.com

Tel: 0086-025-68037686

Fax: 0086-025-68035151