

IP3 Receptor polyclonal antibody

Catalog: BS90732

Host: Rabbit

Reactivity: Human, Mouse, Rat

BackGround:

Intracellular channel that mediates calcium release from the endoplasmic reticulum following stimulation by inositol 1,4,5-trisphosphate. Involved in the regulation of epithelial secretion of electrolytes and fluid through the interaction with AHCYL1. Plays a role in ER stress-induced apoptosis. Cytoplasmic calcium released from the ER triggers apoptosis by the activation of CaM kinase II, eventually leading to the activation of downstream apoptosis pathways.

Product:

Rabbit IgG, 1mg/ml in PBS with 0.02% sodium azide, 50% glycerol, pH7.2

Molecular Weight:

314 kDa

Swiss-Prot:

Q14643(Human) P11881(Mouse) P29994(Rat)

Purification&Purity:

Peptide affinity purified.

Applications:

WB:1:500-1:1,000

IHC:1:50-1:200

FC:1:50-1:100

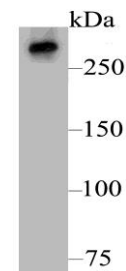
Storage&Stability:

Store at +4 °C after thawing. Aliquot store at -20 °C. Avoid repeated freeze / thaw cycles.

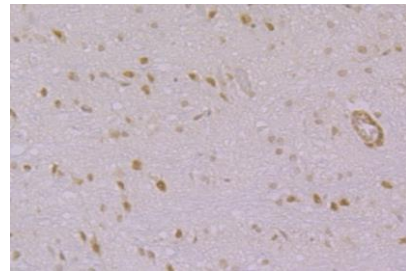
Specificity:

IP3 Receptor polyclonal antibody detects endogenous levels of IP3 Receptor protein.

DATA:



Western blot analysis of IP3 Receptor on HeLa cell lysate using anti-IP3 Receptor antibody at 1/500 dilution.



Immunohistochemical analysis of paraffin-embedded rat brain tissue using anti-IP3 Receptor antibody. Counter stained with hematoxylin.

Note:

For research use only, not for use in diagnostic procedure.

Bioworld Technology, Inc.

Add: 1660 South Highway 100, Suite 500 St. Louis Park, MN 55416, USA.

Email: info@bioworld.com

Tel: 6123263284

Fax: 6122933841

Bioworld technology, co. Ltd.

Add: No 9, weidi road Qixia District Nanjing, 210046, P. R. China.

Email: info@biogot.com

Tel: 0086-025-68037686

Fax: 0086-025-68035151