

Islet 1 polyclonal antibody

Catalog: BS90744

Host: Rabbit

Reactivity: Human, Mouse

BackGround:

Islet-1 (ISL1 transcription factor, LIM/homeodomain) and Islet-2 (ISL2 transcription factor, LIM/homeodomain) contain amino-terminal LIM domains and a carboxy-terminal homeodomain and both influence developmental events. Islet-1 influences embryogenesis of the pancreatic islets of Langerhans and neural tube motor neuron differentiation. In developing mouse teeth, Islet-1 mediates patterning of dentition as an activator of Bmp4 expression in incisor (distal) areas of the stomatodeal epithelium. Islet-1 expression defines cardiac progenitor cell populations and is required for normal cardiac development and asymmetry. Islet-2 activity in newly generated motor neurons permits the diversification of visceral and somatic motor neuron subtypes in the developing spinal cord. Murine Islet-2 specifies retinal ganglion cell (RGC) laterality by repressing an ipsilateral pathfinding program unique to the ventral-temporal crescent (VTC) of RGCs in a Zic2- and EphB1-dependent manner.

Product:

Rabbit IgG, 1mg/ml in PBS with 0.02% sodium azide, 50% glycerol, pH7.2

Molecular Weight:

39 kDa

Swiss-Prot:

P61371(Human) P61372(Mouse)

Purification&Purity:

ProA affinity purified

Applications:

WB:1:1,000

ICC:1:50-1:200

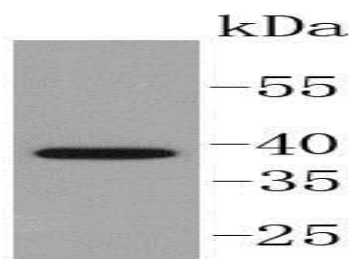
Storage&Stability:

Store at +4 °C after thawing. Aliquot store at -20 °C or -80 °C. Avoid repeated freeze / thaw cycles.

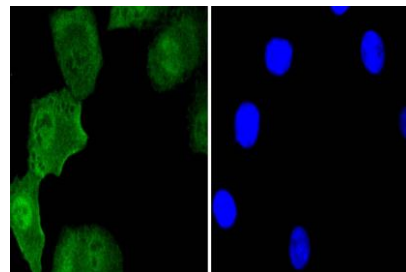
Specificity:

Islet 1 polyclonal antibody detects endogenous levels of Islet 1 protein.

DATA:



Western blot analysis of Islet 1 on MCF-7 cell lysates using anti-Islet 1 antibody at 1/1,000 dilution.



ICC staining Islet 1 in A549 cells (green). The nuclear counter stain is DAPI (blue). Cells were fixed in paraformaldehyde, permeabilised with 0.25% Triton X100/PBS.

Note:

For research use only, not for use in diagnostic procedure.

Bioworld Technology, Inc.

Add: 1660 South Highway 100, Suite 500 St. Louis Park, MN 55416, USA.

Email: info@bioworld.com

Tel: 6123263284

Fax: 6122933841

Bioworld technology, co. Ltd.

Add: No 9, weidi road Qixia District Nanjing, 210046, P. R. China.

Email: info@biogot.com

Tel: 0086-025-68037686

Fax: 0086-025-68035151