

L1CAM polyclonal antibody

Catalog: BS90783

Host: Rabbit

Reactivity: Human

BackGround:

Cell adhesion molecules are a family of closely related cell surface glycoproteins involved in cell-cell interactions during growth and are thought to play an important role in embryogenesis and development. Neuronal cell adhesion molecule (NCAM) expression is observed in a variety of human tumors, including neuroblastomas, rhabdomyosarcomas, Wilm's tumors, Ewing's sarcomas and some primitive myeloid malignancies. The NCAM-L1 adhesion molecule (CD171) plays an important role in axon guidance and cell migration in the nervous system. The presence of NCAM-L1 might contribute to tumor progression by promoting cell adhesion and migration and is known to be expressed by neurons, neuroblastomas and other malignant tumors.

Product:

Rabbit IgG, 1mg/ml in PBS with 0.02% sodium azide, 50% glycerol, pH7.2

Molecular Weight:

85/250 kDa

Swiss-Prot:

P32004(Human)

Purification&Purity:

ProA affinity purified

Applications:

WB:1:1,000-1:5,000

IHC:1:50-1:200

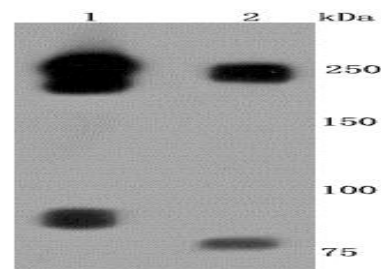
Storage&Stability:

Store at +4 °C after thawing. Aliquot store at -20 °C or -80 °C. Avoid repeated freeze / thaw cycles.

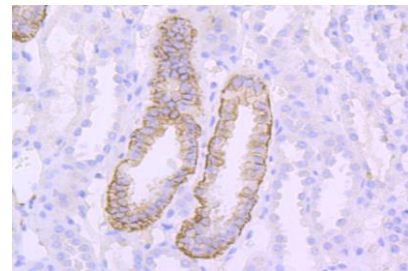
Specificity:

L1CAM polyclonal antibody detects endogenous levels of L1CAM protein.

DATA:



Western blot analysis of L1CAM on different cells lysates using anti-L1CAM antibody at 1/500 dilution. Positive control: Line 1: Hela
Line 2: human brain



Immunohistochemical analysis of paraffin-embedded human kidney tissue using anti-L1CAM antibody. Counter stained with hematoxylin.

Note:

For research use only, not for use in diagnostic procedure.

Bioworld Technology, Inc.

Add: 1660 South Highway 100, Suite 500 St. Louis Park, MN 55416, USA.

Email: info@bioworld.com

Tel: 6123263284

Fax: 6122933841

Bioworld technology, co. Ltd.

Add: No 9, weidi road Qixia District Nanjing, 210046, P. R. China.

Email: info@biogot.com

Tel: 0086-025-68037686

Fax: 0086-025-68035151