

LC3B polyclonal antibody

Catalog: BS90791

Host: Rabbit

Reactivity: Human, Mouse, Rat

BackGround:

Microtubule-associated proteins (MAPs) regulate microtubule stability and play critical roles in neuronal development and in maintaining the balance between neuronal plasticity and rigidity. MAP-light chain 3 beta (MAP-LC3 β) and MAP-light chain 3 alpha (MAP-LC3 α) are subunits of both MAP1A and MAP1B. MAP-LC3 β , a homolog of Apg8p, is essential for autophagy and associated to the autophagosome membranes after processing. Two forms of LC3 β , the cytosolic LC3-I and the membrane-bound LC3-II, are produced post-translationally. LC3-I is formed by the removal of the C-terminal 22 amino acids from newly synthesized LC3 β , followed by the conversion of a fraction of LC3-I into LC3-II. LC3 enhances fibronectin mRNA translation in ductus arteriosus cells through association with 60S ribosomes and binding to an AU-rich element in the 3' untranslated region of fibronectin mRNA. This facilitates sorting of fibronectin mRNA onto rough endoplasmic reticulum and translation. MAP LC3 β may also be involved in formation of autophagosomal vacuoles. It is expressed primarily in heart, testis, brain and skeletal muscle.

Product:

Rabbit IgG, 1mg/ml in PBS with 0.02% sodium azide, 50% glycerol, pH7.2

Molecular Weight:

14 kDa

Swiss-Prot:

Q9GZQ8(Human) Q9CQV6(Mouse) Q62625(Rat)

Purification&Purity:

ProA affinity purified

Applications:

WB:1:1,000-1:2,000

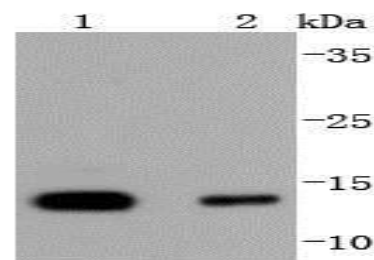
Storage&Stability:

Store at +4 °C after thawing. Aliquot store at -20 °C or -80 °C. Avoid repeated freeze / thaw cycles.

Specificity:

LC3B polyclonal antibody detects endogenous levels of LC3B protein.

DATA:



Western blot analysis of LC3B on different lysates using anti-LC3B antibody at 1/1,000 dilution. Positive control: Lane 1: HeLa Lane 2: MCF-7

Note:

For research use only, not for use in diagnostic procedure.

Bioworld Technology, Inc.

Add: 1660 South Highway 100, Suite 500 St. Louis Park, MN 55416, USA.

Email: info@bioworld.com

Tel: 6123263284

Fax: 6122933841

Bioworld technology, co. Ltd.

Add: No 9, weidi road Qixia District Nanjing, 210046, P. R. China.

Email: info@biogot.com

Tel: 0086-025-68037686

Fax: 0086-025-68035151