

LDHA polyclonal antibody

Catalog: BS90792

Host: Rabbit

Reactivity: Human, mouse, rat

BackGround:

Lactate dehydrogenase (LDH) is an enzyme present in a wide variety of organisms, including plants and animals. It catalyses the interconversion of pyruvate and lactate with concomitant interconversion of NADH and NAD⁺. In medicine, LDH is often used as a marker of tissue breakdown as LDH is abundant in red blood cells and can function as a marker for hemolysis. In mammals, three types of LDH subunits (35 kDa) are encoded by the genes Ldh-A, Ldh-B, and Ldh-C. Lactate dehydrogenase B (LDH-B, heart subunit, LDH-H) is involved in the conversion of L-lactate and NAD to pyruvate and NADH and it is predominantly localized in the heart tissue. Similar to other LDH subunit, LDH-B is considered to be an important marker for germ cell tumor.

Product:

Rabbit IgG, 1mg/ml in PBS with 0.02% sodium azide, 50% glycerol, pH7.2

Molecular Weight:

37 kDa

Swiss-Prot:

P00338

Purification&Purity:

Peptide affinity purified

Applications:

WB:1:500

IHC:1:200

FC:1:100-1:200

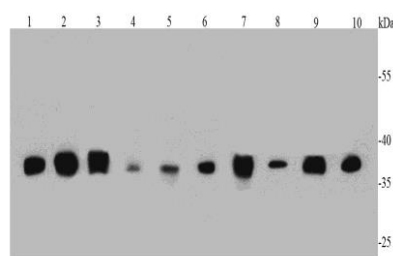
Storage&Stability:

Store at +4 °C after thawing. Aliquot store at -20 °C or -80 °C. Avoid repeated freeze / thaw cycles.

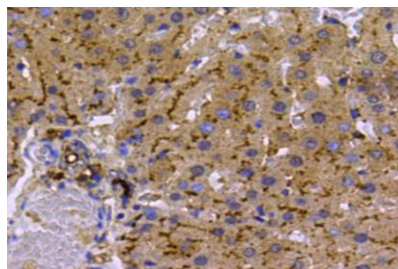
Specificity:

LDHA polyclonal antibody detects endogenous levels of LDHA protein.

DATA:



Western blot analysis of LDHA on different cell lysates using anti-LDHA antibody at 1/500 dilution. Positive control: Lane 1: A549 Lane 2: HeLa Lane 3: A431 Lane 4: 293 Lane 5: Jurkat Lane 6: MCF-7 Lane 7: Human liver Lane 8: Human kidney Lane 9: Human brain Lane 10: Human thymus



Immunohistochemical analysis of paraffin-embedded rat liver tissue using anti-LDHA antibody. Counter stained with hematoxylin.

Note:

For research use only, not for use in diagnostic procedure.

Bioworld Technology, Inc.

Add: 1660 South Highway 100, Suite 500 St. Louis Park, MN 55416, USA.

Email: info@bioworld.com

Tel: 6123263284

Fax: 6122933841

Bioworld technology, co. Ltd.

Add: No 9, weidi road Qixia District Nanjing, 210046, P. R. China.

Email: info@biogot.com

Tel: 0086-025-68037686

Fax: 0086-025-68035151