

## LDL Receptor polyclonal antibody

Catalog: BS90794

Host: Rabbit

Reactivity: Human, Mouse

### BackGround:

LDLR (low density lipoprotein receptor) is a member of the LDL receptor gene family, which includes LDLR, LRP, Megalin, VLDLR, and ApoER2. The LDL receptor family is characterized by a cluster of cysteine-rich class A repeats, epidermal growth factor (EGF)-like repeats, YWTD repeats, and an O-linked sugar domain. The LDL receptor is a cell surface transmembrane protein that mediates the uptake of low density lipoprotein and its degradation in the lysosome, which provides cholesterol to cells. The cytoplasmic domain of the LDL receptor is necessary for the receptor to cluster in coated pits, which promotes the rapid endocytosis of bound LDL. Mutations in LDLR cause the autosomal dominant disease, familial hypercholesterolemia (FH), which promotes premature coronary atherosclerosis.

### Product:

Rabbit IgG, 1mg/ml in PBS with 0.02% sodium azide, 50% glycerol, pH7.2

### Molecular Weight:

140 kDa

### Swiss-Prot:

P01130(Human) P35951(Mouse)

### Purification&Purity:

ProA affinity purified

### Applications:

WB:1:1,000-1:2,000

ICC:1:50-1:200

IHC:1:50-1:200

FC:1:50-1:100

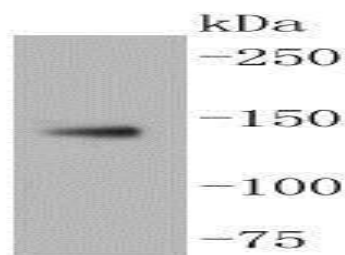
### Storage&Stability:

Store at +4 °C after thawing. Aliquot store at -20 °C or -80 °C. Avoid repeated freeze / thaw cycles.

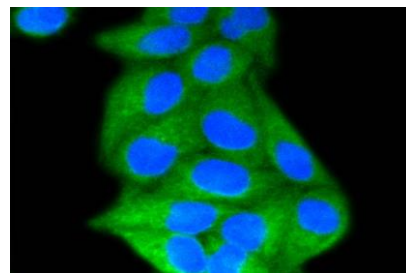
### Specificity:

LDL Receptor polyclonal antibody detects endogenous levels of LDL Receptor protein.

### DATA:



Western blot analysis of LDL Receptor on MCF-7 lysates using anti-LDL Receptor antibody at 1/1,000 dilution.



ICC staining LDL Receptor in HeLa cells (green). The nuclear counter stain is DAPI (blue). Cells were fixed in paraformaldehyde, permeabilized with 0.25% Triton X100/PBS.

### Note:

For research use only, not for use in diagnostic procedure.

### Bioworld Technology, Inc.

Add: 1660 South Highway 100, Suite 500 St. Louis Park, MN 55416, USA.

Email: [info@bioworld.com](mailto:info@bioworld.com)

Tel: 6123263284

Fax: 6122933841

### Bioworld technology, co. Ltd.

Add: No 9, weidi road Qixia District Nanjing, 210046, P. R. China.

Email: [info@biogot.com](mailto:info@biogot.com)

Tel: 0086-025-68037686

Fax: 0086-025-68035151