

Leptin Receptor polyclonal antibody

Catalog: BS90795

Host: Rabbit

Reactivity: Human, Mouse, Rat

BackGround:

Receptor for obesity factor (leptin). On ligand binding, mediates signaling through JAK2/STAT3. Involved in the regulation of fat metabolism and, in a hematopoietic pathway, required for normal lymphopoiesis. May play a role in reproduction. Can also mediate the ERK/FOS signaling pathway.

Product:

Rabbit IgG, 1mg/ml in PBS with 0.02% sodium azide, 50% glycerol, pH7.2

Molecular Weight:

132 kDa

Swiss-Prot:

P48357(Human) P48356(Mouse) Q62959(Rat)

Purification&Purity:

ProA affinity purified

Applications:

FC:1:50-1:100

WB:1:500-1:1,000

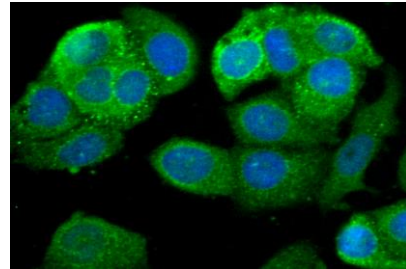
Storage&Stability:

Store at +4 °C after thawing. Aliquot store at -20 °C or -80 °C. Avoid repeated freeze / thaw cycles.

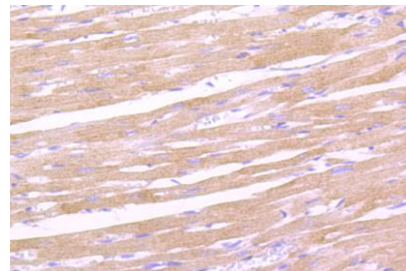
Specificity:

Leptin Receptor polyclonal antibody detects endogenous levels of Leptin Receptor protein.

DATA:



ICC staining Leptin Receptor in MCF-7 cells (green). The nuclear counter stain is DAPI (blue). Cells were fixed in paraformaldehyde, permeabilised with 0.25% Triton X100/PBS.



Immunohistochemical analysis of paraffin-embedded rat heart tissue using anti-Leptin Receptor antibody. Counter stained with hematoxylin.

Note:

For research use only, not for use in diagnostic procedure.

Bioworld Technology, Inc.

Add: 1660 South Highway 100, Suite 500 St. Louis Park, MN 55416, USA.

Email: info@bioworld.com

Tel: 6123263284

Fax: 6122933841

Bioworld technology, co. Ltd.

Add: No 9, weidi road Qixia District Nanjing, 210046, P. R. China.

Email: info@biogot.com

Tel: 0086-025-68037686

Fax: 0086-025-68035151