

## LGR5 polyclonal antibody

Catalog: BS90796

Host: Rabbit

Reactivity: Human, mouse

**BackGround:**

G-protein coupled receptor GPR49 (also known as Leucine-rich repeat-containing G-protein coupled receptor 5, Lgr5) is a stem cell marker of the intestinal epithelium and the hair follicle. It is expressed in the gonads, the adrenal gland, and in the brain, overexpressed in cancers of the ovary, colon and liver.

**Product:**

Rabbit IgG, 1mg/ml in PBS with 0.02% sodium azide, 50% glycerol, pH7.2

**Molecular Weight:**

95 kDa

**Swiss-Prot:**

O75473

**Purification&Purity:**

Peptide affinity purified

**Applications:**

WB:1:1,000

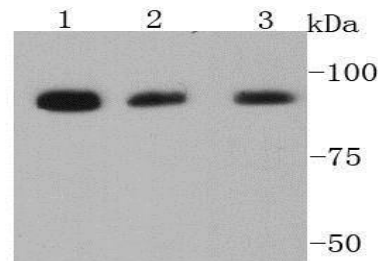
IHC:1:200

**Storage&Stability:**

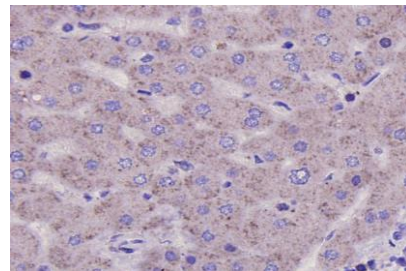
Store at +4 °C after thawing. Aliquot store at -20 °C or -80 °C. Avoid repeated freeze / thaw cycles.

**Specificity:**

LGR5 polyclonal antibody detects endogenous levels of LGR5 protein.

**DATA:**

Western blot analysis of LGR5 on different cell lysates using anti-LGR5 antibody at 1/1000 dilution. Positive control: Lane 1: F9 Lane 2: HeLa Lane 3: K562



Immunohistochemical analysis of paraffin-embedded human liver tissue using anti-LGR5 antibody. Counter stained with hematoxylin.

**Note:**

For research use only, not for use in diagnostic procedure.

**Bioworld Technology, Inc.**

Add: 1660 South Highway 100, Suite 500 St. Louis Park, MN 55416, USA.

Email: [info@bioworld.com](mailto:info@bioworld.com)

Tel: 6123263284

Fax: 6122933841

**Bioworld technology, co. Ltd.**

Add: No 9, weidi road Qixia District Nanjing, 210046, P. R. China.

Email: [info@biogot.com](mailto:info@biogot.com)

Tel: 0086-025-68037686

Fax: 0086-025-68035151