

LGR5/GPR49 polyclonal antibody

Catalog: BS90797

Host: Rabbit

Reactivity: Human, Mouse, Rat

Background:

G protein-coupled receptors (GPCRs), also designated seven transmembrane (7TM) receptors or heptahelical receptors, interact with G proteins (heterotrimeric GTPases) to synthesize intracellular second messengers, such as diacylglycerol, cyclic AMP, inositol phosphates and calcium ions. Their diverse biological functions range from vision and olfaction to neuronal and endocrine signaling and are involved in many pathological conditions. LGR5 (leucine-rich repeat-containing G-protein coupled receptor 5), also known as GPR49 or GPR67, is a 907 amino acid multi-pass membrane protein that contains 17 leucine-rich repeats and belongs to the G protein-coupled receptor family. Expressed in placenta, skeletal muscle and spinal cord, LGR5 functions as an orphan receptor that is thought to play an important role in embryonic growth control and cellular differentiation. Overexpression of LGR5 is associated with increased tumor susceptibility and malignant transformation, implicating LGR5 as a potent tumor-inducing protein.

Product:

Rabbit IgG, 1mg/ml in PBS with 0.02% sodium azide, 50% glycerol, pH7.2

Molecular Weight:

100 kDa

Swiss-Prot:

O75473(Human) Q9Z1P4(Mouse) Unigene: 214063(Rat)

Purification&Purity:

ProA affinity purified

Applications:

WB:1:1,000

FC:1:50-1:100

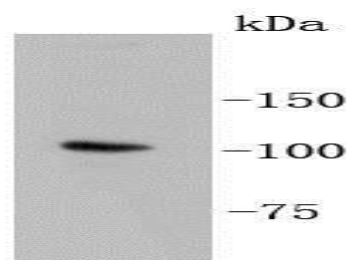
Storage&Stability:

Store at +4 °C after thawing. Aliquot store at -20 °C or -80 °C. Avoid repeated freeze / thaw cycles.

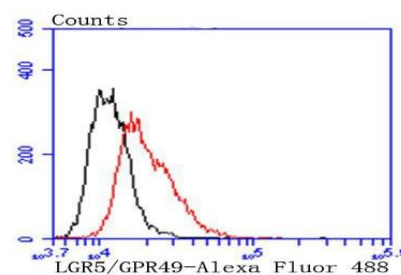
Specificity:

LGR5/GPR49 polyclonal antibody detects endogenous levels of LGR5/GPR49 protein.

DATA:



Western blot analysis of LGR5/GPR49 on SH-SY-5Y lysates using anti-LGR5/GPR49 antibody at 1/1,000 dilution.



Flow cytometric analysis of SH-SY-5Y cells with LGR5/GPR49 antibody at 1/50 dilution (red) compared with an unlabelled control (cells without incubation with primary antibody; black). Alexa Fluor 488-conjugated goat anti rabbit IgG was used as the secondary antibody.

Note:

For research use only, not for use in diagnostic procedure.

Bioworld Technology, Inc.

Add: 1660 South Highway 100, Suite 500 St. Louis Park, MN 55416, USA.

Email: info@bioworld.com

Tel: 6123263284

Fax: 6122933841

Bioworld technology, co. Ltd.

Add: No 9, weidi road Qixia District Nanjing, 210046, P. R. China.

Email: info@biogot.com

Tel: 0086-025-68037686

Fax: 0086-025-68035151