

Lipoprotein lipase polyclonal antibody

Catalog: BS90801

Host: Rabbit

Reactivity: Human

BackGround:

The Lipase gene family belongs to one of the most robust genetic superfamilies found in living organisms, which includes esterases and thioesterases. Lipase gene products are related by tertiary structure rather than primary amino acid sequence. Members of the AB hydrolase subfamily include hepatic lipase (HL), endothelial lipase (EL), lipoprotein lipase (LPL) and pancreatic lipase (PL). HL balances the composition and transport of lipoproteins in human plasma. Synthesized in endothelial cells, EL hydrolyzes high density lipoproteins. LPL, a homodimer attached to the membrane by a GPI-anchor, mediates the hydrolysis of triglycerides of very low density lipoproteins and circulating chylomicrons. Defects in LPL may cause chylomicronemia syndrome or a form of lipoprotein lipase deficiency characterized by hypertriglyceridemia.

Product:

Rabbit IgG, 1mg/ml in PBS with 0.02% sodium azide, 50% glycerol, pH7.2

Molecular Weight:

53 kDa

Swiss-Prot:

P06858(Human)

Purification&Purity:

ProA affinity purified

Applications:

WB:1:500-1:1,000

IHC:1:50-1:200

Storage&Stability:

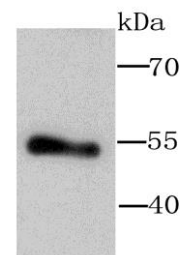
Store at +4 °C after thawing. Aliquot store at -20 °C or

-80 °C. Avoid repeated freeze / thaw cycles.

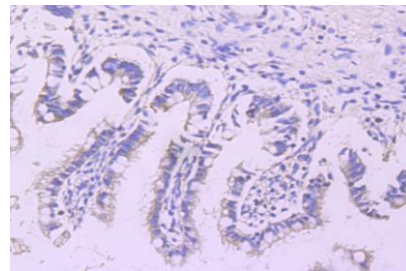
Specificity:

Lipoprotein lipase polyclonal antibody detects endogenous levels of Lipoprotein lipase protein.

DATA:



Western blot analysis of Lipoprotein lipase on human placenta tissue lysate using anti-Lipoprotein lipase antibody at 1/1,000 dilution.



Immunohistochemical analysis of paraffin-embedded human ileum tissue using anti-Lipoprotein lipase antibody. Counter stained with hematoxylin.

Note:

For research use only, not for use in diagnostic procedure.

Bioworld Technology, Inc.

Add: 1660 South Highway 100, Suite 500 St. Louis Park, MN 55416, USA.

Email: info@bioworld.com

Tel: 6123263284

Fax: 6122933841

Bioworld technology, co. Ltd.

Add: No 9, weidi road Qixia District Nanjing, 210046, P. R. China.

Email: info@biogot.com

Tel: 0086-025-68037686

Fax: 0086-025-68035151