

LMNB2 polyclonal antibody

Catalog: BS90803

Host: Rabbit

Reactivity: Human,mouse,rat

BackGround:

Lamins are components of the nuclear lamina, a fibrous layer on the nucleoplasmic side of the inner nuclear membrane, which is thought to provide a framework for the nuclear envelope and may also interact with chromatin. B-type lamins undergo a series of modifications, such as farnesylation and phosphorylation. Increased phosphorylation of the lamins occurs before envelope disintegration and probably plays a role in regulating lamin associations. Defects in LMNB2 are a cause of partial acquired lipodystrophy (APLD), which is a rare childhood disease characterized by loss of subcutaneous fat from the face and trunk.

Product:

Rabbit IgG, 1mg/ml in PBS with 0.02% sodium azide, 50% glycerol, pH7.2

Molecular Weight:

68 kDa

Swiss-Prot:

Q03252

Purification&Purity:

Peptide affinity purified

Applications:

WB:1:1,000-1:2,000

ICC:1:200

IHC:1:200

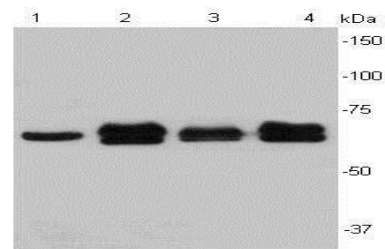
Storage&Stability:

Store at +4 °C after thawing. Aliquot store at -20 °C or -80 °C. Avoid repeated freeze / thaw cycles.

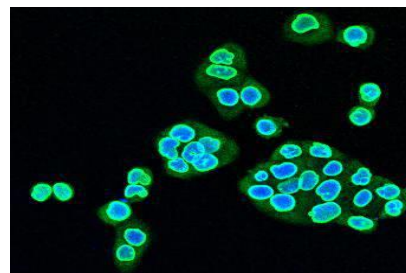
Specificity:

LMNB2 polyclonal antibody detects endogenous levels of LMNB2 protein.

DATA:



Western blot analysis of Lamin B2 on different cell lysates using anti-LMNB2 antibody at 1/1000 dilution. Positive control: Lane 1: HeLa Lane 2: Jurkat Lane 3: HepG2 Lane 4: Raji



ICC staining of LMNB2 in HeLa cells (green). The nuclear counter stain is DAPI (blue). Cells were fixed in paraformaldehyde, permeabilised with 0.25% Triton X100/PBS.

Note:

For research use only, not for use in diagnostic procedure.

Bioworld Technology, Inc.

Add: 1660 South Highway 100, Suite 500 St. Louis Park, MN 55416, USA.

Email: info@bioworld.com

Tel: 6123263284

Fax: 6122933841

Bioworld technology, co. Ltd.

Add: No 9, weidi road Qixia District Nanjing, 210046, P. R. China.

Email: info@biogot.com

Tel: 0086-025-68037686

Fax: 0086-025-68035151