

## LOX-1 polyclonal antibody

Catalog: BS90805

Host: Rabbit

Reactivity: Human, Mouse

### BackGround:

The oxidized low density lipoprotein (lectin-like) receptor-1, Ox-LDL R-1, is a type II membrane protein that is a member of the C-type lectin family and acts as a cell-surface receptor for oxidized low density lipoprotein (Ox-LDL). Ox-LDL plays a role in early atherosclerosis, which includes the transformation of monocyte-derived macrophages to foam cells in atherosclerotic lesions. The binding of Ox-LDL to Ox-LDL R-1 may also trigger the activation of the NFkB signal transduction pathway. Ox-LDL R-1, also designated scavenger receptor class E, member 1 (SCARE1); lectin-type oxidized LDL receptor 1 (LOX-1); and CLEC8A, is expressed by vascular endothelial cells, smooth muscle cells and macrophages. It is expressed endogenously as a precursor form with N-linked high mannose carbohydrate chains and as a mature form due to further glycosylation. The N-linked glycosylation of Ox-LDL R-1 appears to be necessary for adequate transportation to the cell surface and efficient ligand binding.

### Product:

Rabbit IgG, 1mg/ml in PBS with 0.02% sodium azide, 50% glycerol, pH7.2

### Molecular Weight:

31 kDa

### Swiss-Prot:

P78380(Human) Q9EQ09(Mouse)

### Purification&Purity:

Protein affinity purified.

### Applications:

WB:1:500-1:1,000

ICC:1:50-1:200

IHC:1:50-1:200

FC:1:50-1:100

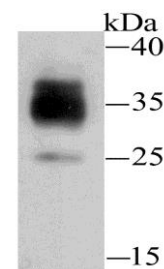
### Storage&Stability:

Store at +4 °C after thawing. Aliquot store at -20 °C or -80 °C. Avoid repeated freeze / thaw cycles.

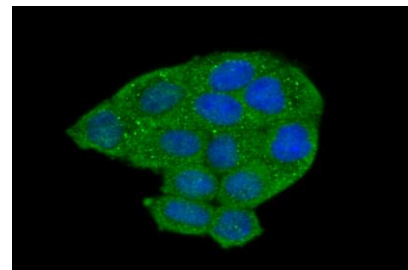
### Specificity:

LOX-1 polyclonal antibody detects endogenous levels of LOX-1 protein.

### DATA:



Western blot analysis of LOX1 on siHa cell lysate using anti-LOX1 antibody at 1/100 dilution.



ICC staining LOX1 in HeLa cells (green). The nuclear counter stain is DAPI (blue). Cells were fixed in paraformaldehyde, permeabilised with 0.25% Triton X100/PBS.

### Note:

For research use only, not for use in diagnostic procedure.

### Bioworld Technology, Inc.

Add: 1660 South Highway 100, Suite 500 St. Louis Park, MN 55416, USA.

Email: [info@bioworld.com](mailto:info@bioworld.com)

Tel: 6123263284

Fax: 6122933841

### Bioworld technology, co. Ltd.

Add: No 9, weidi road Qixia District Nanjing, 210046, P. R. China.

Email: [info@biogot.com](mailto:info@biogot.com)

Tel: 0086-025-68037686

Fax: 0086-025-68035151