

LRG1 polyclonal antibody

Catalog: BS90808

Host: Rabbit

Reactivity: Human

BackGround:

LRG1 (leucine-rich alpha-2-glycoprotein), also known as LRG, is a 347 amino acid secreted protein that contains eight LRR (leucine-rich repeats) and one LRRCT domain. The leucine-rich repeat (LRR) family of proteins, including LRG1, have been shown to be involved in protein-protein interaction, signal transduction, cell adhesion and development. Found mainly in plasma, LRG1 is expressed during granulocyte differentiation. The gene that encodes LRG1 consists of nearly 3,000 bases and maps to human chromosome 19p13.3. Chromosome 19 consists of over 63 million bases, houses approximately 1,400 genes and is recognized for having the greatest gene density of the human chromosomes. It is the genetic home for a number of immunoglobulin (Ig) superfamily members, including the killer cell and leukocyte Ig-like receptors, a number of ICAMs, the CEACAM and PSG families and Fc receptors (FcRs).

Product:

Rabbit IgG, 1mg/ml in PBS with 0.02% sodium azide, 50% glycerol, pH7.2

Molecular Weight:

38 kDa

Swiss-Prot:

P02750(Human)

Purification&Purity:

ProA affinity purified

Applications:

WB:1:500-1:2,000

IHC:1:50-1:200

IP:1:10-1:50

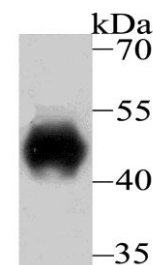
Storage&Stability:

Store at +4 °C after thawing. Aliquot store at -20 °C or -80 °C. Avoid repeated freeze / thaw cycles.

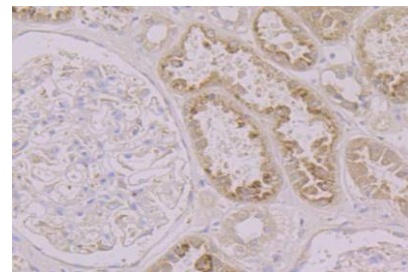
Specificity:

LRG1 polyclonal antibody detects endogenous levels of LRG1 protein.

DATA:



Western blot analysis of LRG1 on human serum using anti-LRG1 antibody at 1/500 dilution.



Immunohistochemical analysis of paraffin-embedded human kidney tissue using anti-LRG1 antibody. Counter stained with hematoxylin.

Note:

For research use only, not for use in diagnostic procedure.

Bioworld Technology, Inc.

Add: 1660 South Highway 100, Suite 500 St. Louis Park, MN 55416, USA.

Email: info@bioworld.com

Tel: 6123263284

Fax: 6122933841

Bioworld technology, co. Ltd.

Add: No 9, weidi road Qixia District Nanjing, 210046, P. R. China.

Email: info@biogot.com

Tel: 0086-025-68037686

Fax: 0086-025-68035151