

LSD1 polyclonal antibody

Catalog: BS90810

Host: Rabbit

Reactivity: Human, Mouse, Rat

Background:

Histone methylation regulates chromatin structure and transcription and maintains an epigenetic state of the cell. Histone methylation is dynamically regulated by histone methylases and demethylases. Lysine-specific histone demethylase 1 (LSD1), also designated BHC110, is a flavin-dependent amine oxidase which catalyzes the removal of one or two methyl groups from the methyl-lysine-4 side chain of Histone H3. The LSD1 protein contains a SWIRM domain, a FAD-binding motif and an amine oxidase domain. Association with CoREST, a SANT domain-containing corepressor, positively regulates LSD1. CoREST mediates the demethylation ability of LSD1 and protects it from proteasomal degradation in vivo. PHF21A (also designated BCH80), a PHD domain-containing protein, inhibits activity of LSD1/CoREST mediated de-methylation. The LSD1 protein also co-localizes with the androgen receptor in human prostate tumor cells and in unaffected prostate cells, stimulating androgen-receptor-dependent transcription.

Product:

Rabbit IgG, 1mg/ml in PBS with 0.02% sodium azide, 50% glycerol, pH7.2

Molecular Weight:

110 kDa

Swiss-Prot:

O60341(Human) Q6ZQ88(Mouse)

Purification&Purity:

Peptide affinity purified

Applications:

WB:1:500-1,000

ICC:1:500-1:2,000

IHC:1:50-1:200

FC:1:50-1:100

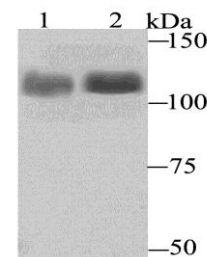
Storage&Stability:

Store at +4 °C after thawing. Aliquot store at -20 °C or -80 °C. Avoid repeated freeze / thaw cycles.

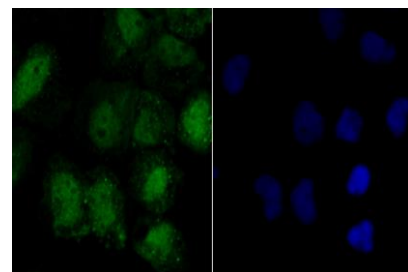
Specificity:

LSD1 polyclonal antibody detects endogenous levels of LSD1 protein.

DATA:



Western blot analysis of LSD1 on PC-12 and SiHa cell lysates using anti-LSD1 antibody at 1/1,000 dilution.



ICC staining LSD1 in A431 cells (green). The nuclear counter stain is DAPI (blue). Cells were fixed in paraformaldehyde, permeabilised with 0.25% Triton X100/PBS.

Note:

For research use only, not for use in diagnostic procedure.

Bioworld Technology, Inc.

Add: 1660 South Highway 100, Suite 500 St. Louis Park, MN 55416, USA.

Email: info@bioworld.com

Tel: 6123263284

Fax: 6122933841

Bioworld technology, co. Ltd.

Add: No 9, weidi road Qixia District Nanjing, 210046, P. R. China.

Email: info@biogot.com

Tel: 0086-025-68037686

Fax: 0086-025-68035151