

## Lumican polyclonal antibody

Catalog: BS90812

Host: Rabbit

Reactivity: Human, Mouse, Rat

### BackGround:

Lumican, a member of the small leucine-rich proteoglycans (SLRPs) family of proteins, is a keratan sulfate proteoglycan present in large quantities in the corneal stroma and in interstitial collagenous matrices of the heart, aorta, skeletal muscle, skin, and intervertebral discs. During collagen fibrillogenesis, lumican regulates the assembly of collagens into higher order fibrils, limiting the growth of fibrils in diameter. Lumican is present in the extracellular matrix of human articular cartilage at all ages, with a far greater abundance in the adult. The gene encoding human lumican maps to chromosome 12q21.3-q22.

### Product:

Rabbit IgG, 1mg/ml in PBS with 0.02% sodium azide, 50% glycerol, pH7.2

### Molecular Weight:

38 kDa

### Swiss-Prot:

P51884(Human)

### Purification&Purity:

ProA affinity purified

### Applications:

WB:1:500-1:2,000

ICC:1:50-1:200

IHC:1:50-1:200

FC:1:50-1:100

### Storage&Stability:

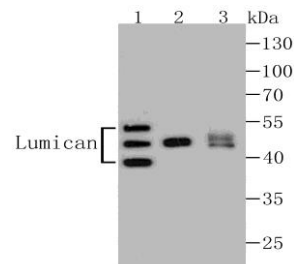
Store at +4 °C after thawing. Aliquot store at -20 °C. Avoid repeated freeze / thaw cycles.

### Specificity:

Lumican polyclonal antibody detects endogenous levels

of Lumican protein.

### DATA:



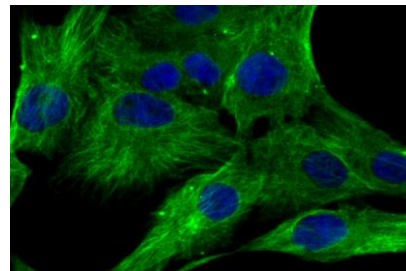
Western blot analysis of Lumican on different lysates using anti-Lumican antibody at 1/1,000 dilution.

Positive control:

Lane 1: Jurkat

Lane 2: 293T

Lane 3: Human skin



ICC staining Lumican in MG-63 cells (green). The nuclear counter stain is DAPI (blue). Cells were fixed in paraformaldehyde, permeabilised with 0.25% Triton X100/PBS.

### Note:

For research use only, not for use in diagnostic procedure.

### Bioworld Technology, Inc.

Add: 1660 South Highway 100, Suite 500 St. Louis Park, MN 55416, USA.

Email: [info@bioworld.com](mailto:info@bioworld.com)

Tel: 6123263284

Fax: 6122933841

### Bioworld technology, co. Ltd.

Add: No 9, weidi road Qixia District Nanjing, 210046, P. R. China.

Email: [info@biogot.com](mailto:info@biogot.com)

Tel: 0086-025-68037686

Fax: 0086-025-68035151