

LY6A polyclonal antibody

Catalog: BS90814

Host: Rabbit

Reactivity: Mouse

BackGround:

Lymphocyte antigen 6A-2/6E-1

Product:

Rabbit IgG, 1mg/ml in PBS with 0.02% sodium azide, 50% glycerol, pH7.2

Molecular Weight:

14/40 kDa

Swiss-Prot:

P05533(Mouse)

Purification&Purity:

ProA affinity purified

Applications:

WB:1:1,000-1:5,000

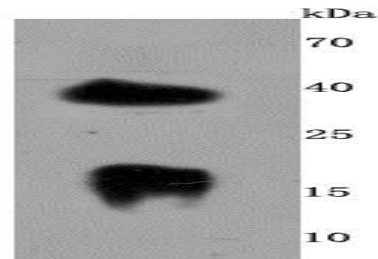
IHC:1:50-1:200

Storage&Stability:

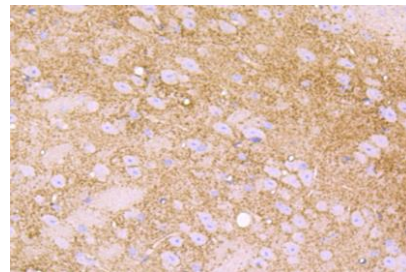
Store at +4 °C after thawing. Aliquot store at -20 °C or -80 °C. Avoid repeated freeze / thaw cycles.

Specificity:

LY6A polyclonal antibody detects endogenous levels of LY6A protein.

DATA:

Western blot analysis of LY6A on mouse brain cells lysates using anti-LY6A antibody at 1/500 dilution.



Immunohistochemical analysis of paraffin-embedded brain mouse tissue using anti-LY6A antibody. Counter stained with hematoxylin.

Note:

For research use only, not for use in diagnostic procedure.

Bioworld Technology, Inc.

Add: 1660 South Highway 100, Suite 500 St. Louis Park, MN 55416, USA.

Email: info@bioworld.com

Tel: 6123263284

Fax: 6122933841

Bioworld technology, co. Ltd.

Add: No 9, weidi road Qixia District Nanjing, 210046, P. R. China.

Email: info@biogot.com

Tel: 0086-025-68037686

Fax: 0086-025-68035151