

## Mad2L2 polyclonal antibody

Catalog: BS90820

Host: Rabbit

Reactivity: Human, Mouse, Rat

### BackGround:

Cell cycle progression is subject to arrest at the mitotic spindle assembly checkpoint in response to incorrect spindle fiber assembly. MAD2 (for mitotic arrest-deficient) is a component of the mitotic spindle checkpoint. Cells with mutated MAD2 do not undergo mitotic arrest in response to incorrect spindle fiber assembly, which results in missegregation and eventual cell death. A breast carcinoma cell line with reduced MAD2 expression, T-47D, was shown to complete mitosis in the presence of Nocodazole, an inhibitor of mitotic spindle assembly. MAD2 is localized to unattached kinetochores during pro-metaphase and disassociates upon spindle fiber attachment, indicating that MAD2 regulates kinetochore binding to the spindle fibers. Human MAD2 has also been shown to associate with Insulin receptor (IR), but not IGF-IR, implicating MAD2 as a mediator for IR-specific signaling. MAD2B, a MAD2 homolog, is required for the execution of the mitotic checkpoint monitoring the kinetochore-spindle attachment process and, if the process is not complete, MAD2B delays the onset of anaphase.

### Product:

Rabbit IgG, 1mg/ml in PBS with 0.02% sodium azide, 50% glycerol, pH7.2

### Molecular Weight:

24 kDa

### Swiss-Prot:

Q9UI95(Human) Q9D752(Mouse) D3Z8D9(Rat)

### Purification&Purity:

ProA affinity purified

### Applications:

WB:1:500

IHC:1:50-1:200

FC:1:50-1:100

IP:1:10-1:50

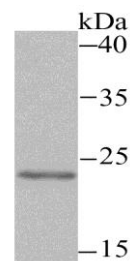
### Storage&Stability:

Store at +4 °C after thawing. Aliquot store at -20 °C or -80 °C. Avoid repeated freeze / thaw cycles.

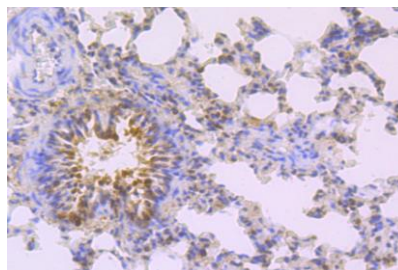
### Specificity:

Mad2L2 polyclonal antibody detects endogenous levels of Mad2L2 protein.

### DATA:



Western blot analysis of Mad2L2 on SiHa cell using anti-Mad2L2 antibody at 1/500 dilution.



Immunohistochemical analysis of paraffin-embedded rat lung tissue using anti-Mad2L2 antibody. Counter stained with hematoxylin.

### Note:

For research use only, not for use in diagnostic procedure.

### Bioworld Technology, Inc.

Add: 1660 South Highway 100, Suite 500 St. Louis Park, MN 55416, USA.

Email: [info@bioworld.com](mailto:info@bioworld.com)

Tel: 6123263284

Fax: 6122933841

### Bioworld technology, co. Ltd.

Add: No 9, weidi road Qixia District Nanjing, 210046, P. R. China.

Email: [info@biogot.com](mailto:info@biogot.com)

Tel: 0086-025-68037686

Fax: 0086-025-68035151