

MAP1LC3A polyclonal antibody

Catalog: BS90822

Host: Rabbit

Reactivity: Human, Mouse, Rat

BackGround:

Microtubule-associated proteins (MAPs) regulate microtubule stability and play critical roles in neuronal development and in maintaining the balance between neuronal plasticity and rigidity. MAP-light chain 3 beta (MAP-LC3 β) and MAP-light chain 3 alpha (MAP-LC3 α), both of which are mammalian homologs of yeast Apg8, are subunits that can associate with either MAP-1A or MAP-1B. While MAP-LC3 β is essential for autophagy and is associated with autophagosome membranes after processing, MAP LC3 α is involved in the formation of autophagosomal vacuoles and is localized to the intracytoplasmic membrane. MAP LC3 α is expressed as two alternatively spliced isoforms that are expressed in testis, brain, heart, liver and skeletal muscle, but are absent in thymus and peripheral blood leukocytes.

Product:

Rabbit IgG, 1mg/ml in PBS with 0.02% sodium azide, 50% glycerol, pH7.2

Molecular Weight:

14 kDa

Swiss-Prot:

Q9H492(Human) Q91VR7(Mouse) Q6XVN8(Rat)

Purification&Purity:

ProA affinity purified

Applications:

WB:1:1,000-1:2,000

ICC:1:50-1:200

IHC:1:50-1:200

Storage&Stability:

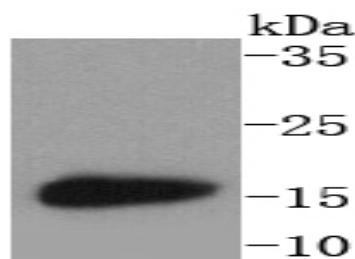
Store at +4 °C after thawing. Aliquot store at -20 °C or

-80 °C. Avoid repeated freeze / thaw cycles.

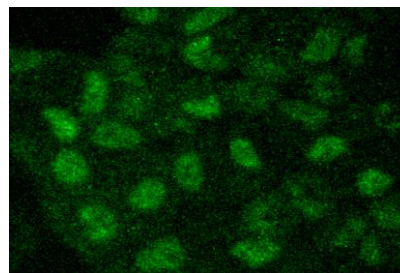
Specificity:

MAP1LC3A polyclonal antibody detects endogenous levels of MAP1LC3A protein.

DATA:



Western blot analysis of MAP1LC3A on mouse brain lysates using anti-MAP1LC3A antibody at 1/1,000 dilution.



ICC staining MAP1LC3A in HeLa cells (green). The nuclear counter stain is DAPI (blue). Cells were fixed in paraformaldehyde, permeabilised with 0.25% Triton X100/PBS.

Note:

For research use only, not for use in diagnostic procedure.

Bioworld Technology, Inc.

Add: 1660 South Highway 100, Suite 500 St. Louis Park, MN 55416, USA.

Email: info@bioworld.com

Tel: 6123263284

Fax: 6122933841

Bioworld technology, co. Ltd.

Add: No 9, weidi road Qixia District Nanjing, 210046, P. R. China.

Email: info@biogot.com

Tel: 0086-025-68037686

Fax: 0086-025-68035151