

MAPKAP Kinase 2 polyclonal antibody

Catalog: BS90823

Host: Rabbit

Reactivity: Human, Mouse

BackGround:

The MAPKAP kinases (for MAP kinase activated protein kinases) are a group of MAP kinase substrates which are themselves kinases. In response to activation, the MAP kinases phosphorylate downstream components on a consensus Pro-X-Ser/Thr-Pro motif. Several kinases that contain this motif have been identified and serve as substrates for the ERK and p38 MAP kinases. These include the serine/threonine kinases Rsk-1 (also designated MAPKAP kinase-1), Rsk-2 and Rsk-3, which are phosphorylated by ERK1 and ERK2. Similarly, p38 phosphorylates and activates the serine/threonine kinases MAPKAP kinase-2 and MAPKAP kinase-3 (also designated 3pK). The serine/threonine kinases Mnk1 and Mnk2 are substrates for both ERK and p38 MAP kinases.

Product:

Rabbit IgG, 1mg/ml in PBS with 0.02% sodium azide, 50% glycerol, pH7.2

Molecular Weight:

46 kDa

Swiss-Prot:

P49137(Human) P49138(Mouse)

Purification&Purity:

ProA affinity purified

Applications:

WB:1:500-1:1,000

IP:1:10-1:50

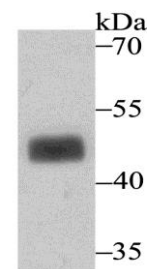
Storage&Stability:

Store at +4 °C after thawing. Aliquot store at -20 °C or -80 °C. Avoid repeated freeze / thaw cycles.

Specificity:

MAPKAP Kinase 2 polyclonal antibody detects endogenous levels of MAPKAP Kinase 2 protein.

DATA:



Western blot analysis of MAPKAP Kinase 2 on SK-Br-3 cell lysate using anti-MAPKAP Kinase 2 antibody at 1/500 dilution.

Note:

For research use only, not for use in diagnostic procedure.

Bioworld Technology, Inc.

Add: 1660 South Highway 100, Suite 500 St. Louis Park, MN 55416, USA.

Email: info@bioworld.com

Tel: 6123263284

Fax: 6122933841

Bioworld technology, co. Ltd.

Add: No 9, weidi road Qixia District Nanjing, 210046, P. R. China.

Email: info@biogot.com

Tel: 0086-025-68037686

Fax: 0086-025-68035151