

## MARK3 polyclonal antibody

Catalog: BS90825

Host: Rabbit

Reactivity: Human, Mouse, Rat

### BackGround:

MARK3 (MAP/microtubule affinity-regulating kinase 3), also known as C-TAK1 (Cdc25C-associated protein kinase 1), EMK-2 (ELKL motif kinase 2), protein kinase STK10 or serine/threonine-protein kinase p78, is a 753 amino acid peripheral membrane protein that phosphorylates Cdc25C on Serine 216 and is ubiquitously expressed in various human tissue and cell lines. Existing as six alternatively spliced isoforms, MARK3 belongs to the Ser/Thr protein kinase family and the protein kinase superfamily. MARK3 has been suggested to mediate the binding of the 14-3-3 proteins through its kinase activity and acts as a negative regulator of mitosis. The gene encoding MARK3 maps to human chromosome 14q32.3 and mouse chromosome 12 F1.

### Product:

Rabbit IgG, 1mg/ml in PBS with 0.02% sodium azide, 50% glycerol, pH7.2

### Molecular Weight:

84 kDa

### Swiss-Prot:

P27448 Human;Q03141 Mouse;Q8VHF0 Rat

### Purification&Purity:

Protein A purified.

### Applications:

WB:1:500

IP:1:10-1:50

ICC:1:50-1:200

IHC:1:50-1:200

FC:1:50-1:100

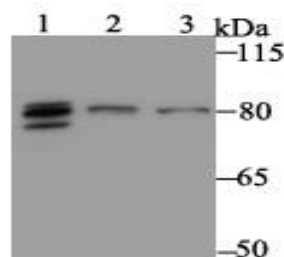
### Storage&Stability:

Store at +4 °C after thawing. Aliquot store at -20 °C. Avoid repeated freeze / thaw cycles.

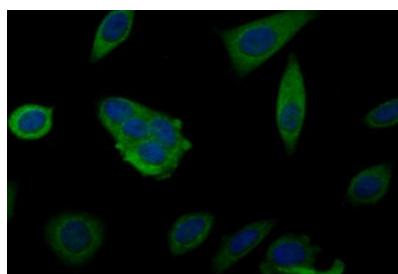
### Specificity:

MARK3 polyclonal antibody detects endogenous levels of MARK3 protein.

### DATA:



Western blot analysis of MARK3 on different lysates. Proteins were transferred to a PVDF membrane and blocked with 5% BSA in PBS for 1 hour at room temperature. The primary antibody was used at a 1:500 dilution in 5% BSA at room temperature for 2 hours. Goat Anti-Rabbit IgG - HRP Secondary Antibody (HA1001) at 1:5,000 dilution was used for 1 hour at room temperature. Positive control: Lane 1: rat brain tissue lysate Lane 2: A431 cell lysate Lane 3: 293 cell lysate



Immunocytochemistry staining MARK3 in MCF-7 cells (green). Formalin fixed cells were permeabilized with 0.1% Triton X-100 in TBS for 10 minutes at room temperature and blocked with 1% Blocker BSA for 15 minutes at room temperature. Cells were probed with MARK3 monoclonal antibody at a dilution of 1:100 for 1 hour at room temperature, washed with PBS. Alexa Fluor<sup>®</sup> 488 Goat anti-Rabbit IgG was used as the secondary antibody at 1/100 dilution. The nuclear counter stain is DAPI (blue).

### Note:

For research use only, not for use in diagnostic procedure.

### Bioworld Technology, Inc.

Add: 1660 South Highway 100, Suite 500 St. Louis Park, MN 55416, USA.

Email: [info@bioworld.com](mailto:info@bioworld.com)

Tel: 6123263284

Fax: 6122933841

### Bioworld technology, co. Ltd.

Add: No 9, weidi road Qixia District Nanjing, 210046, P. R. China.

Email: [info@biogot.com](mailto:info@biogot.com)

Tel: 0086-025-68037686

Fax: 0086-025-68035151



## PRODUCT DATA SHEET

Bioworld Technology, Inc.

---

---

### **Bioworld Technology, Inc.**

**Add:** 1660 South Highway 100, Suite 500 St. Louis Park,  
MN 55416, USA.

**Email:** [info@bioworld.com](mailto:info@bioworld.com)

**Tel:** 6123263284

**Fax:** 6122933841

### **Bioworld technology, co. Ltd.**

**Add:** No 9, weidi road Qixia District Nanjing, 210046,  
P. R. China.

**Email:** [info@biogot.com](mailto:info@biogot.com)

**Tel:** 0086-025-68037686

**Fax:** 0086-025-68035151