

## MOG polyclonal antibody

Catalog: BS90877

Host: Rabbit

Reactivity: Human, Mouse, Rat

### BackGround:

Myelin oligodendrocyte glycoprotein (MOG) is a myelin component of the central nervous system that influences completion and maintenance of the myelin sheath, cell adhesion and oligodendrocyte microtubule stability. MOG localizes on the oligodendrocyte cell surface and on the outermost lamellae of mature myelin. MOG epitopes targeted by the autoimmune T cell response influence demyelination and contribute to multiple sclerosis (MS). Alternatively spliced transcript variants encoding different isoforms have been identified.

### Product:

Rabbit IgG, 1mg/ml in PBS with 0.02% sodium azide, 50% glycerol, pH7.2

### Molecular Weight:

28 kDa

### Swiss-Prot:

Q16653(Human) Q61885(Mouse) Q63345(Rat)

### Purification&Purity:

ProA affinity purified

### Applications:

WB:1:500-1:1,000

IHC:1:50-1:200

### Storage&Stability:

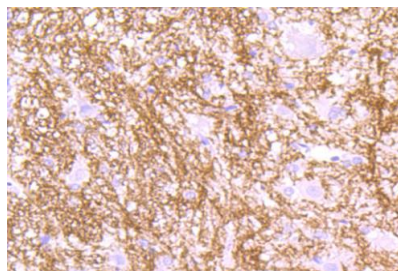
Store at +4 °C after thawing. Aliquot store at -20 °C or -80 °C. Avoid repeated freeze / thaw cycles.

### Specificity:

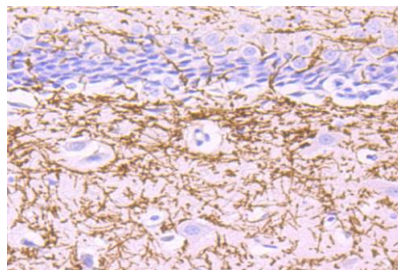
MOG polyclonal antibody detects endogenous levels of

MOG protein.

### DATA:



Immunohistochemical analysis of paraffin-embedded rat spinal cord tissue using anti-Myelin oligodendrocyte glycoprotein antibody. Counter stained with hematoxylin.



Immunohistochemical analysis of paraffin-embedded rat brain tissue using anti-Myelin oligodendrocyte glycoprotein antibody. Counter stained with hematoxylin.

### Note:

For research use only, not for use in diagnostic procedure.

### Bioworld Technology, Inc.

Add: 1660 South Highway 100, Suite 500 St. Louis Park, MN 55416, USA.

Email: [info@bioworld.com](mailto:info@bioworld.com)

Tel: 6123263284

Fax: 6122933841

### Bioworld technology, co. Ltd.

Add: No 9, weidi road Qixia District Nanjing, 210046, P. R. China.

Email: [info@biogot.com](mailto:info@biogot.com)

Tel: 0086-025-68037686

Fax: 0086-025-68035151