

## MSH6 polyclonal antibody

Catalog: BS90883

Host: Rabbit

Reactivity: Human, mouse, rat

### BackGround:

The DNA mismatch repair system (MMR) repairs post-replication DNA, inhibits recombination between nonidentical DNA sequences, and induces both check-point and apoptotic responses following certain types of DNA damage. MSH6 heterodimerizes with MSH2 to form MutS alpha, which binds to DNA mismatches thereby initiating DNA repair. Mutations in MSH6 and other MMR proteins have been found in a large proportion of hereditary nonpolyposis colorectal cancer (Lynch Syndrome), the most common form of inherited colorectal cancer in the Western world.

### Product:

Rabbit IgG, 1mg/ml in PBS with 0.02% sodium azide, 50% glycerol, pH7.2

### Molecular Weight:

152 kDa

### Swiss-Prot:

P52701

### Purification&Purity:

Peptide affinity purified

### Applications:

WB:1:1,000

ICC:1:200

IHC:1:200

FC:1:100-1:200

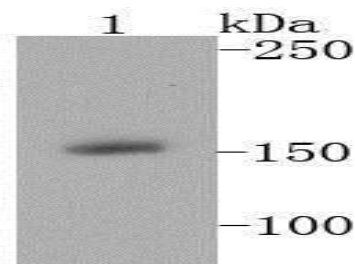
### Storage&Stability:

Store at +4 °C after thawing. Aliquot store at -20 °C or -80 °C. Avoid repeated freeze / thaw cycles.

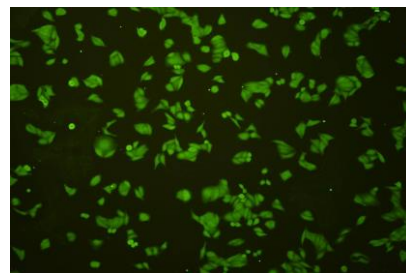
### Specificity:

MSH6 polyclonal antibody detects endogenous levels of MSH6 protein.

### DATA:



Western blot analysis of MSH6 on A431 cell lysates using anti-MSH6 antibody at 1/1000 dilution.



ICC staining MSH6 in HeLa cells (green). Cells were fixed in paraformaldehyde, permeabilised with 0.25% Triton X100/PBS.

### Note:

For research use only, not for use in diagnostic procedure.

### Bioworld Technology, Inc.

Add: 1660 South Highway 100, Suite 500 St. Louis Park, MN 55416, USA.

Email: [info@bioworld.com](mailto:info@bioworld.com)

Tel: 6123263284

Fax: 6122933841

### Bioworld technology, co. Ltd.

Add: No 9, weidi road Qixia District Nanjing, 210046, P. R. China.

Email: [info@biogot.com](mailto:info@biogot.com)

Tel: 0086-025-68037686

Fax: 0086-025-68035151