

mtTFA polyclonal antibody

Catalog: BS90890

Host: Rabbit

Reactivity: Human

BackGround:

Binds to the mitochondrial light strand promoter and functions in mitochondrial transcription regulation. Required for accurate and efficient promoter recognition by the mitochondrial RNA polymerase. Promotes transcription initiation from the HSP1 and the light strand promoter by binding immediately upstream of transcriptional start sites. Is able to unwind and bend DNA. Required for maintenance of normal levels of mitochondrial DNA. May play a role in organizing and compacting mitochondrial DNA. target DNA. Interacts with TFB1M and TFB2M.

Product:

Rabbit IgG, 1mg/ml in PBS with 0.02% sodium azide, 50% glycerol, pH7.2

Molecular Weight:

Swiss-Prot:

Q00059(Human)

Purification&Purity:

ProA affinity purified

Applications:

WB:1:200-1:500

ICC/IF:1:50-1:200

IHC:1:50-1:200

IP:1:10-1:50

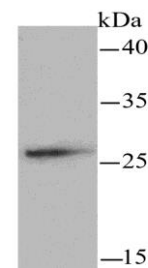
Storage&Stability:

Store at +4 °C after thawing. Aliquot store at -20 °C or -80 °C. Avoid repeated freeze / thaw cycles.

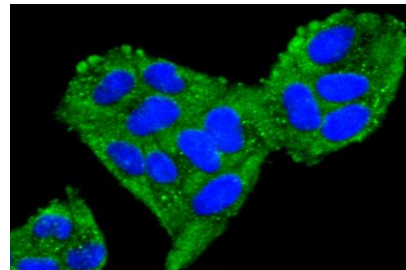
Specificity:

mtTFA polyclonal antibody detects endogenous levels of mtTFA protein.

DATA:



Western blot analysis of mtTFA on HeLa cell using anti-mtTFA antibody at 1/1,000 dilution.



ICC staining mtTFA in HeLa cells (green). The nuclear counter stain is DAPI (blue). Cells were fixed in paraformaldehyde, permeabilised with 0.25% Triton X100/PBS.

Note:

For research use only, not for use in diagnostic procedure.

Bioworld Technology, Inc.

Add: 1660 South Highway 100, Suite 500 St. Louis Park, MN 55416, USA.

Email: info@bioworld.com

Tel: 6123263284

Fax: 6122933841

Bioworld technology, co. Ltd.

Add: No 9, weidi road Qixia District Nanjing, 210046, P. R. China.

Email: info@biogol.com

Tel: 0086-025-68037686

Fax: 0086-025-68035151