

Myoglobin polyclonal antibody

Catalog: BS90907

Host: Rabbit

Reactivity: Human, Mouse, Rat

BackGround:

Myoglobin is a cytosolic oxygen binding protein responsible for the storage and diffusion of oxygen within myocytes. Expression of myoglobin is highest in skeletal and cardiac muscle. Myoglobin is necessary for the maintenance of mitochondrial respiration during heavy and sustained contractile activity, and it is thought to transport oxygen from erythrocytes to mitochondria. The genomic structure of myoglobin appears to be conserved across a broad range of species, and contains a putative polyadenylation signal and a polypyrimidine-rich region. Human myoglobin is specified by a single gene, and it has been identified in human smooth muscle.

Product:

Rabbit IgG, 1mg/ml in PBS with 0.02% sodium azide, 50% glycerol, pH7.2

Molecular Weight:

17 kDa

Swiss-Prot:

P02144(Human) P04247(Mouse) Q9QZ76(Rat)

Purification&Purity:

ProA affinity purified

Applications:

WB:1:1,000-1:5,000

ICC:1:50-1:200

IHC:1:50-1:200

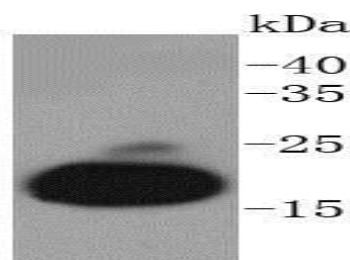
Storage&Stability:

Store at +4 °C after thawing. Aliquot store at -20 °C or -80 °C. Avoid repeated freeze / thaw cycles.

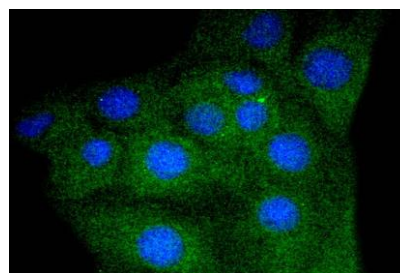
Specificity:

Myoglobin polyclonal antibody detects endogenous levels of Myoglobin protein.

DATA:



Western blot analysis of Myoglobin on human skeletal muscle lysates using anti-Myoglobin antibody at 1/1,000 dilution.



ICC staining Myoglobin in C2C12 cells (green). The nuclear counter stain is DAPI (blue). Cells were fixed in paraformaldehyde, permeabilised with 0.25% Triton X100/PBS.

Note:

For research use only, not for use in diagnostic procedure.

Bioworld Technology, Inc.

Add: 1660 South Highway 100, Suite 500 St. Louis Park, MN 55416, USA.

Email: info@bioworld.com

Tel: 6123263284

Fax: 6122933841

Bioworld technology, co. Ltd.

Add: No 9, weidi road Qixia District Nanjing, 210046, P. R. China.

Email: info@biogot.com

Tel: 0086-025-68037686

Fax: 0086-025-68035151