

NCK1 polyclonal antibody

Catalog: BS90917

Host: Rabbit

Reactivity: Human, Mouse, Rat

Background:

The NCK family of SH2/SH3 adaptor proteins consists of two members, NCK1 (NCK α) and NCK2 (NCK β), which couple tyrosine kinase signaling, including the EGF and PDGF receptor-pathways, to downstream signaling proteins. Specifically, overexpression of Nck1 in NIH/3T3 cells decreases DNA synthesis stimulated by EGF. Furthermore, the SH2 domain of NCK2 inhibits EGF- and PDGF-induced DNA synthesis. The SH3 domain of NCK binds a proline-rich domain on PAK, a known actin cytoskeleton regulator. The NCK protein thus mediates the interaction between PAK and RAC. The NCK2 protein binds human PDGFR-b (Tyr 1009); overexpression of Nck2 inhibits PDGF-induced membrane ruffling and lamellipod formation. Various growth factor receptors, cell surface antigens and adhesion molecules phosphorylate mammalian NCK1 and NCK2. The human NCK1 and NCK2 genes map to chromosomes 3q22.3 and 2q12.2, respectively.

Product:

Rabbit IgG, 1mg/ml in PBS with 0.02% sodium azide, 50% glycerol, pH7.2

Molecular Weight:

43/35 kDa

Swiss-Prot:

P16333(Human) Q99M51(Mouse) B2RZ33(Rat)

Purification&Purity:

ProA affinity purified

Applications:

WB:1:500-1:2,000

ICC:1:50-1:200

IHC:1:50-1:200

FC:1:50-1:100

IP:1:10-1:50

Storage&Stability:

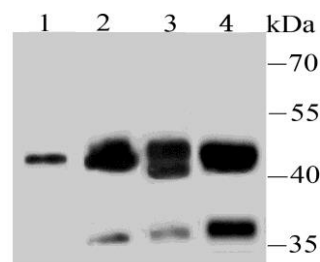
Store at +4 °C after thawing. Aliquot store at -20 °C or

-80 °C. Avoid repeated freeze / thaw cycles.

Specificity:

NCK1 polyclonal antibody detects endogenous levels of NCK1 protein.

DATA:



Western blot analysis of NCK1 on different lysates using anti-NCK1 antibody at 1/500 dilution.

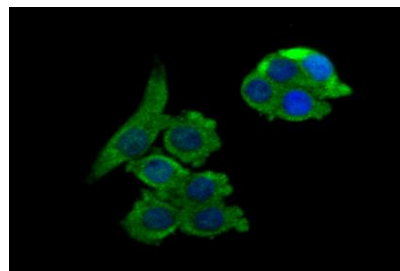
Positive control:

Lane 1: Hela

Lane 1: NIH-3T3

Lane 2: Rat kidney tissue

Lane 3: Mouse testis tissue



ICC staining NCK1 in LOVO cells (green). The nuclear counter stain is DAPI (blue). Cells were fixed in paraformaldehyde, permeabilised with 0.25% Triton X100/PBS.

Note:

For research use only, not for use in diagnostic procedure.

Bioworld Technology, Inc.

Add: 1660 South Highway 100, Suite 500 St. Louis Park, MN 55416, USA.

Email: info@bioworld.com

Tel: 6123263284

Fax: 6122933841

Bioworld technology, co. Ltd.

Add: No 9, weidi road Qixia District Nanjing, 210046, P. R. China.

Email: info@biogot.com

Tel: 0086-025-68037686

Fax: 0086-025-68035151



PRODUCT DATA SHEET

Bioworld Technology, Inc.

Bioworld Technology, Inc.

Add: 1660 South Highway 100, Suite 500 St. Louis Park,
MN 55416, USA.

Email: info@bioworld.com

Tel: 6123263284

Fax: 6122933841

Bioworld technology, co. Ltd.

Add: No 9, weidi road Qixia District Nanjing, 210046,
P. R. China.

Email: info@biogot.com

Tel: 0086-025-68037686

Fax: 0086-025-68035151