

NEDD8 polyclonal antibody

Catalog: BS90926

Host: Rabbit

Reactivity: Human, Mouse, Rat

BackGround:

NEDD8 is a ubiquitin (Ub)-like molecule that shares 80% homology with ubiquitin, a protein known to modify and target various proteins for proteolytic degradation. NEDD8 and the corresponding yeast homolog Rub1 are activated by the E1 ubiquitin activating enzyme UBA2, which forms isopeptide linkages between thio esters. Similar to the Ub-mediated proteolytic pathway, NEDD8 is covalently coupled to an E3 Ub ligase by the E2 conjugating enzyme, Ubc12. NEDD8 preferentially associates with the CUL-2 protein in the E3 ligase complex CBCVHL, which consists of cullin proteins associating with elongin B/C and the tumor suppressor F-box protein, von Hippel Lindau (VHL). NEDD8 is predominantly localized to the nucleus and is highly expressed in adult heart and skeletal muscle. In vitro studies indicate that NEDD8 tetramers are also able to bind to the 26S Proteasome, and that they assemble into complexes with conserved Ub-like moieties, suggesting that NEDD8 may regulate proteolysis of intracellular proteins similar to other Ub-mediated pathways.

Product:

Rabbit IgG, 1mg/ml in PBS with 0.02% sodium azide, 50% glycerol, pH7.2

Molecular Weight:

9 kDa

Swiss-Prot:

Q07954(Human) Q91ZX7(Mouse) Unigene:22436(Rat)

Purification&Purity:

ProA affinity purified

Applications:

WB:1:500-1:1,000

ICC:1:50-1:200

IHC:1:50-1:100

IP:1:50

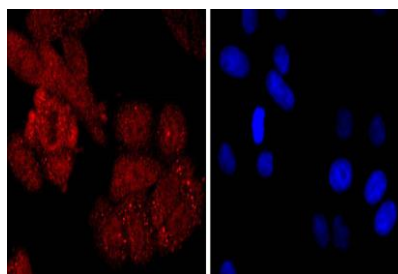
Storage&Stability:

Store at +4 °C after thawing. Aliquot store at -20 °C or -80 °C. Avoid repeated freeze / thaw cycles.

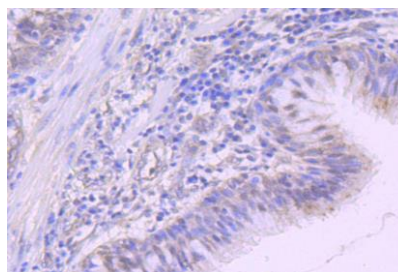
Specificity:

NEDD8 polyclonal antibody detects endogenous levels of NEDD8 protein.

DATA:



ICC staining NEDD8 in HepG2 cells (red). The nuclear counter stain is DAPI (blue). Cells were fixed in paraformaldehyde, permeabilised with 0.25% Triton X100/PBS.



Immunohistochemical analysis of paraffin-embedded human lung cancer tissue using anti-NEDD8 antibody. Counter stained with hematoxylin.

Note:

For research use only, not for use in diagnostic procedure.

Bioworld Technology, Inc.

Add: 1660 South Highway 100, Suite 500 St. Louis Park, MN 55416, USA.

Email: info@bioworld.com

Tel: 6123263284

Fax: 6122933841

Bioworld technology, co. Ltd.

Add: No 9, weidi road Qixia District Nanjing, 210046, P. R. China.

Email: info@biogot.com

Tel: 0086-025-68037686

Fax: 0086-025-68035151