

NLRC3 polyclonal antibody

Catalog: BS90946

Host: Rabbit

Reactivity: Human, Mouse

Background:

NLRC3, short for NOD-like receptor family CARD domain containing 3, is an intracellular protein that plays a role in the immune system. It was previously known as nucleotide-binding oligomerization domain, leucine rich repeat and CARD domain containing 3 (NOD3) and CLR16.2. NLRC3 inhibits the activity of T cells. Decreases the transcription of genes that are normally up-regulated after T-cell stimulation. Delays degradation of NFKBIA/IKBA.

Product:

Rabbit IgG, 1mg/ml in PBS with 0.02% sodium azide, 50% glycerol, pH7.2

Molecular Weight:

120 kDa

Swiss-Prot:

Q7RTR2(Human) Q5DU56(Mouse)

Purification&Purity:

Peptide affinity purified.

Applications:

WB:1:500-1:2000

ICC:1:50-1:200

IHC:1:50-1:200

FC:1:50-1:200

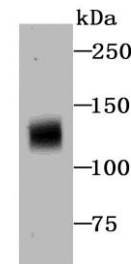
Storage&Stability:

Store at +4 °C after thawing. Aliquot store at -20 °C or -80 °C. Avoid repeated freeze / thaw cycles.

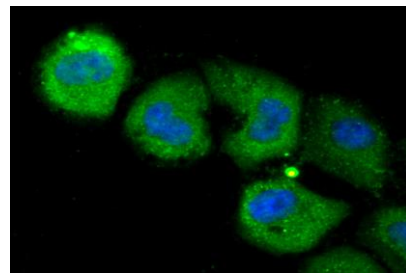
Specificity:

NLRC3 polyclonal antibody detects endogenous levels of NLRC3 protein.

DATA:



Western blot analysis of NLRC3 on human thymus tissue lysates using anti-NLRC3 antibody at 1/500 dilution.



ICC staining NLRC3 in HUVEC cells (green). The nuclear counter stain is DAPI (blue). Cells were fixed in paraformaldehyde, permeabilised with 0.25% Triton X100/PBS.

Note:

For research use only, not for use in diagnostic procedure.

Bioworld Technology, Inc.

Add: 1660 South Highway 100, Suite 500 St. Louis Park, MN 55416, USA.

Email: info@bioworld.com

Tel: 6123263284

Fax: 6122933841

Bioworld technology, co. Ltd.

Add: No 9, weidi road Qixia District Nanjing, 210046, P. R. China.

Email: info@biogot.com

Tel: 0086-025-68037686

Fax: 0086-025-68035151