

## NPHS2 polyclonal antibody

Catalog: BS90960

Host: Rabbit

Reactivity: Human, Mouse, Rat

### BackGround:

Plays a role in the regulation of glomerular permeability, acting probably as a linker between the plasma membrane and the cytoskeleton. Almost exclusively expressed in the podocytes of fetal and mature kidney glomeruli.

### Product:

Rabbit IgG, 1mg/ml in PBS with 0.02% sodium azide, 50% glycerol, pH7.2

### Molecular Weight:

42 kDa

### Swiss-Prot:

Q9NP85(Human) Q91X05(Mouse) Q8K4G9(Rat)

### Purification&Purity:

ProA affinity purified

### Applications:

WB:1:500-1:1,000

IHC:1:50-1:200

FC:1:50-1:100

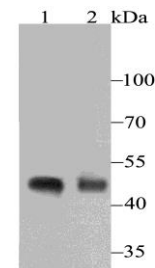
### Storage&Stability:

Store at +4 °C after thawing. Aliquot store at -20 °C or -80 °C. Avoid repeated freeze / thaw cycles.

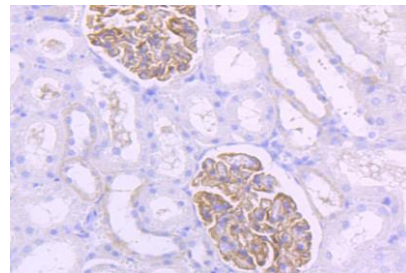
### Specificity:

NPHS2 polyclonal antibody detects endogenous levels of NPHS2 protein.

### DATA:



Western blot analysis of NPHS2 on rat kidney (1) and human kidney (2) tissue lysate using anti-NPHS2 antibody at 1/500 dilution.



Immunohistochemical analysis of paraffin-embedded rat kidney tissue using anti-NPHS2 antibody. Counter stained with hematoxylin.

### Note:

For research use only, not for use in diagnostic procedure.

### Bioworld Technology, Inc.

Add: 1660 South Highway 100, Suite 500 St. Louis Park, MN 55416, USA.

Email: [info@bioworld.com](mailto:info@bioworld.com)

Tel: 6123263284

Fax: 6122933841

### Bioworld technology, co. Ltd.

Add: No 9, weidi road Qixia District Nanjing, 210046, P. R. China.

Email: [info@biogot.com](mailto:info@biogot.com)

Tel: 0086-025-68037686

Fax: 0086-025-68035151