

NSE polyclonal antibody

Catalog: BS90971

Host: Rabbit

Reactivity: Human, Mouse, Rat, zebrafish

BackGround:

Enolases have been characterized as highly conserved cytoplasmic glycolytic enzymes that may be involved in differentiation. Three isoenzymes have been identified, α Enolase, β Enolase and γ Enolase. α Enolase expression has been detected on most tissues, whereas β Enolase is expressed predominantly in muscle tissue and γ Enolase is detected only in nervous tissue. These isoforms exist as both homodimers and heterodimers, and they play a role in converting phosphoglyceric acid to phosphoenolpyruvic acid in the glycolytic pathway.

Product:

Rabbit IgG, 1mg/ml in PBS with 0.02% sodium azide, 50% glycerol, pH7.2

Molecular Weight:

47 kDa

Swiss-Prot:

P09104(Human) P17183(Mouse) P07323(Rat)

Purification&Purity:

ProA affinity purified

Applications:

WB:1:1,000-1:2,000

ICC:1:50-1:200

IHC:1:50-1:200

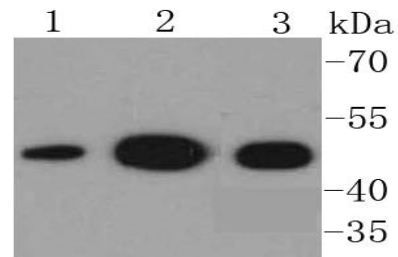
Storage&Stability:

Store at +4 °C after thawing. Aliquot store at -20 °C or -80 °C. Avoid repeated freeze / thaw cycles.

Specificity:

NSE polyclonal antibody detects endogenous levels of NSE protein.

DATA:

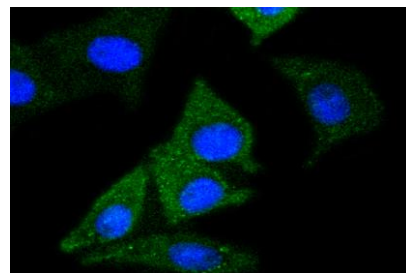


Western blot analysis of NSE on different lysates using anti-NSE antibody at 1/1,000 dilution. Positive control:

Lane 1: HepG2

Lane 2: Hela

Lane 3: 293



ICC staining NSE in SH-SY-5Y cells (green). The nuclear counter stain is DAPI (blue). Cells were fixed in paraformaldehyde, permeabilised with 0.25% Triton X100/PBS.

Note:

For research use only, not for use in diagnostic procedure.

Bioworld Technology, Inc.

Add: 1660 South Highway 100, Suite 500 St. Louis Park, MN 55416, USA.

Email: info@bioworld.com

Tel: 6123263284

Fax: 6122933841

Bioworld technology, co. Ltd.

Add: No 9, weidi road Qixia District Nanjing, 210046, P. R. China.

Email: info@biogot.com

Tel: 0086-025-68037686

Fax: 0086-025-68035151