

## Nudel polyclonal antibody

Catalog: BS90974

Host: Rabbit

Reactivity: Human, Mouse, Rat

### BackGround:

NudE-like protein (Ndel1) is expressed in the testis, brain, heart, hypothalamus, liver, lung, spleen, and stomach, specifically in the interphase centrosome and mitotic spindle. It positively regulates minus-end directed dynein. Evidence suggests that Ndel1 interacts with LIS1 to sustain the function of dynein, thereby impacting microtubule organization, nuclear translocation, and neuronal positioning. Ndel1 is phosphorylated during mitosis and seems to tether dynactin and dynein to the mother centriole for microtubule anchoring. Loss of function of Ndel1 in the developing neocortex impairs neuronal positioning and uncouples the centrosome and nucleus. Ndel1 may also impair mitochondrial transport or function, initiating a cascade of events culminating in psychiatric illness such as lissencephaly and schizophrenia.

### Product:

Rabbit IgG, 1mg/ml in PBS with 0.02% sodium azide, 50% glycerol, pH7.2

### Molecular Weight:

38 kDa

### Swiss-Prot:

Q9GZM8(Human) Q78PB6(Rat)

### Purification&Purity:

ProA affinity purified

### Applications:

WB:1:500-1:2,000

IHC:1:50-1:200

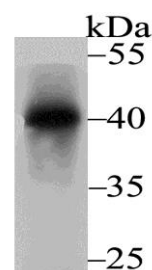
### Storage&Stability:

Store at +4 °C after thawing. Aliquot store at -20 °C. Avoid repeated freeze / thaw cycles.

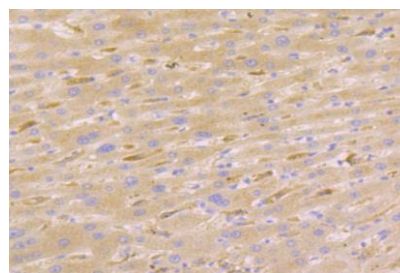
### Specificity:

Nudel polyclonal antibody detects endogenous levels of Nudel protein.

### DATA:



Western blot analysis of Nudel on rat brain tissue lysate using anti-Nudel antibody at 1/2,000 dilution.



Immunohistochemical analysis of paraffin-embedded human liver cancer tissue using anti-Nudel antibody. Counter stained with hematoxylin.

### Note:

For research use only, not for use in diagnostic procedure.

### Bioworld Technology, Inc.

Add: 1660 South Highway 100, Suite 500 St. Louis Park, MN 55416, USA.

Email: [info@bioworld.com](mailto:info@bioworld.com)

Tel: 6123263284

Fax: 6122933841

### Bioworld technology, co. Ltd.

Add: No 9, weidi road Qixia District Nanjing, 210046, P. R. China.

Email: [info@biogot.com](mailto:info@biogot.com)

Tel: 0086-025-68037686

Fax: 0086-025-68035151