

NXF1 polyclonal antibody

Catalog: BS90979

Host: Rabbit

Reactivity: Human

BackGround:

The constitutive transport element (CTE) of type D retroviruses serves as a signal of nuclear export for unspliced viral RNAs. TAP (tip-associating protein, also known as NXF1) mediates the export of CTE-containing simian type D retroviral RNAs through binding directly to the CTE. TAP is associated with a recognized mRNA export pathway and is a member of the multigene family of NXF proteins. NXF proteins belong to an evolutionarily conserved family of proteins, which are characterized by a leucine-rich-repeat domain (LRR) followed by a region known as the nuclear transport factor 2 (NTF2)-like domain.

Product:

Rabbit IgG, 1mg/ml in PBS with 0.02% sodium azide, 50% glycerol, pH7.2

Molecular Weight:

70 kDa

Swiss-Prot:

Q9UBU9(Human)

Purification&Purity:

ProA affinity purified

Applications:

WB:1:500-1:2,000

ICC:1:50-1:100

IP:1:10-1:50

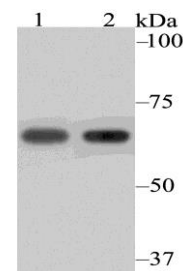
Storage&Stability:

Store at +4 °C after thawing. Aliquot store at -20 °C. Avoid repeated freeze / thaw cycles.

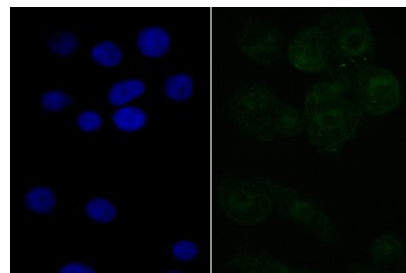
Specificity:

NXF1 polyclonal antibody detects endogenous levels of NXF1 protein.

DATA:



Western blot analysis of NXF1 on 293 (1) and SiHa (2) cell lysate using anti-NXF1 antibody at 1/2,000 dilution.



ICC staining NXF1 in LOVO cells (green). The nuclear counter stain is DAPI (blue). Cells were fixed in paraformaldehyde, permeabilised with 0.25% Triton X100/PBS.

Note:

For research use only, not for use in diagnostic procedure.

Bioworld Technology, Inc.

Add: 1660 South Highway 100, Suite 500 St. Louis Park, MN 55416, USA.

Email: info@bioworld.com

Tel: 6123263284

Fax: 6122933841

Bioworld technology, co. Ltd.

Add: No 9, weidi road Qixia District Nanjing, 210046, P. R. China.

Email: info@biogot.com

Tel: 0086-025-68037686

Fax: 0086-025-68035151