

OOEP polyclonal antibody

Catalog: BS90985

Host: Rabbit

Reactivity: Mouse

BackGround:

OOEP (oocyte-expressed protein homolog), also known as KHDC2 (KH homology domain-containing protein 2) or OEP19 (oocyte- and embryo-specific protein 19), is a 149 amino acid cytoplasmic protein that belongs to the KHDC1 family and contains one KH domain. As a member of the subcortical maternal complex (SCMC), OOEP is necessary for zygotes to progress beyond the first embryonic cell divisions. In addition to OOEP, the SCMC includes NALP5 and TLE6. The gene that encodes OOEP consists of approximately 26,579 bases and maps to human chromosome 6q13. With 170 million base pairs, chromosome 6 comprises nearly 6% of the human genome. Deletion of a portion of the q arm of chromosome 6 is associated with early onset intestinal cancer, suggesting the presence of a cancer susceptibility locus. Additionally, Porphyria cutanea tarda, Parkinson's disease, Stickler syndrome and a susceptibility to bipolar disorder are all associated with genes that map to chromosome 6.

Product:

Rabbit IgG, 1mg/ml in PBS with 0.02% sodium azide, 50% glycerol, pH7.2

Molecular Weight:

Swiss-Prot:

Q9CWE6

Purification&Purity:

Peptide affinity purified

Applications:

IHC:1:200

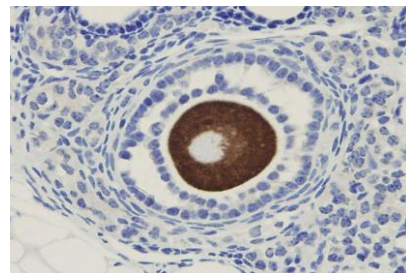
Storage&Stability:

Store at +4 °C after thawing. Aliquot store at -20 °C or -80 °C. Avoid repeated freeze / thaw cycles.

Specificity:

OOEP polyclonal antibody detects endogenous levels of OOEP protein.

DATA:



Immunohistochemical analysis of paraffin-embedded mouse ovary tissue using anti-OOEP antibody. Counter stained with hematoxylin.

Note:

For research use only, not for use in diagnostic procedure.

Bioworld Technology, Inc.

Add: 1660 South Highway 100, Suite 500 St. Louis Park, MN 55416, USA.

Email: info@bioworld.com

Tel: 6123263284

Fax: 6122933841

Bioworld technology, co. Ltd.

Add: No 9, weidi road Qixia District Nanjing, 210046, P. R. China.

Email: info@biogot.com

Tel: 0086-025-68037686

Fax: 0086-025-68035151