

OPA1 polyclonal antibody

Catalog: BS90986

Host: Rabbit

Reactivity: Human, Mouse, Rat

BackGround:

OPA1 is a cause of optic atrophy type 1. OPA1 is mostly expressed in the mitochondrial biogenesis. OPA1 is a cause of optic atrophy type 1. OPA1 is mostly expressed in retina but can also be expressed in brain, testis, heart and skeletal muscles.

Product:

Rabbit IgG, 1mg/ml in PBS with 0.02% sodium azide, 50% glycerol, pH7.2

Molecular Weight:

85 kDa

Swiss-Prot:

O60313(Human) P58281(Mouse) Q2TA68(Rat)

Purification&Purity:

Store at +4 °C after thawing. Aliquot store at -20 °C or -198 °C. Avoid repeated freeze / thaw cycles.

Applications:

WB:1:500-1:1,000

ICC:1:50-1:200

IHC:1:50-1:200

FC:1:50-1:100

Storage&Stability:

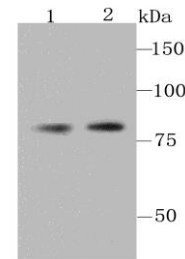
Store at +4 °C after thawing. Aliquot store at -20 °C or -80 °C. Avoid repeated freeze / thaw cycles.

Specificity:

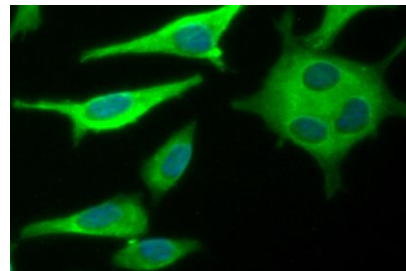
OPA1 polyclonal antibody detects endogenous levels of

OPA1 protein.

DATA:



Western blot analysis of OPA1 on mouse brain tissue(1) and A431 cell(2) lysate using anti-OPA1 antibody at 1/1,000 dilution.



ICC staining OPA1 in HeLa cells (green). The nuclear counter stain is DAPI (blue). Cells were fixed in paraformaldehyde, permeabilised with 0.25% Triton X100/PBS.

Note:

For research use only, not for use in diagnostic procedure.

Bioworld Technology, Inc.

Add: 1660 South Highway 100, Suite 500 St. Louis Park, MN 55416, USA.

Email: info@bioworld.com

Tel: 6123263284

Fax: 6122933841

Bioworld technology, co. Ltd.

Add: No 9, weidi road Qixia District Nanjing, 210046, P. R. China.

Email: info@biogot.com

Tel: 0086-025-68037686

Fax: 0086-025-68035151