

Orai3 polyclonal antibody

Catalog: BS90989

Host: Rabbit

Reactivity: Human, Mouse, Rat

BackGround:

ORAI3 (ORAI Calcium Release-Activated Calcium Modulator 3) is a Protein Coding gene. Among its related pathways are Calcium signaling pathway. Gene Ontology (GO) annotations related to this gene include store-operated calcium channel activity. An important paralog of this gene is ORAI2.

Product:

Rabbit IgG, 1mg/ml in PBS with 0.02% sodium azide, 50% glycerol, pH7.2

Molecular Weight:

31 kDa

Swiss-Prot:

Q9BRQ5(Human) Q6P8G8(Mouse) Q6AXR8(Rat)

Purification&Purity:

Peptide affinity purified.

Applications:

WB:1:500-1:1,000

ICC:1:50-1:200

IHC:1:50-1:200

FC:1:50-1:100

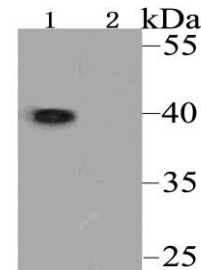
Storage&Stability:

Store at +4 °C after thawing. Aliquot store at -20 °C. Avoid repeated freeze / thaw cycles.

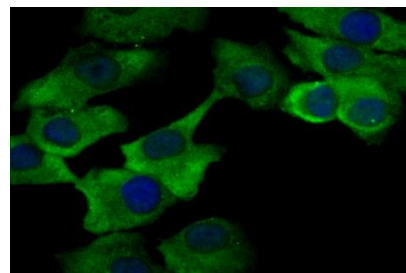
Specificity:

Orai3 polyclonal antibody detects endogenous levels of Orai3 protein.

DATA:



Western blot analysis of Orai3 using anti-Orai3 antibody at 1/500 dilution. Lane 1 : Raji cell lysates Lane 2 : Raji cell lysates(anti-Orai3 antibody+ immunizing peptide)



ICC staining Orai3 in A549 cells (green). The nuclear counter stain is DAPI (blue). Cells were fixed in paraformaldehyde, permeabilised with 0.25% Triton X100/PBS.

Note:

For research use only, not for use in diagnostic procedure.

Bioworld Technology, Inc.

Add: 1660 South Highway 100, Suite 500 St. Louis Park, MN 55416, USA.

Email: info@bioworld.com

Tel: 6123263284

Fax: 6122933841

Bioworld technology, co. Ltd.

Add: No 9, weidi road Qixia District Nanjing, 210046, P. R. China.

Email: info@biogot.com

Tel: 0086-025-68037686

Fax: 0086-025-68035151