

PARP2 polyclonal antibody

Catalog: BS91019

Host: Rabbit

Reactivity: Human, Mouse, Rat

BackGround:

Involved in the base excision repair (BER) pathway, by catalyzing the poly(ADP-ribosyl)ation of a limited number of acceptor proteins involved in chromatin architecture and in DNA metabolism. This modification follows DNA damages and appears as an obligatory step in a detection/signaling pathway leading to the reparation of DNA strand breaks. Mediates serine ADP-ribosylation of target proteins following interaction with HPF1; HPF1 conferring serine specificity.

Product:

Rabbit IgG, 1mg/ml in PBS with 0.02% sodium azide, 50% glycerol, pH7.2

Molecular Weight:

~ 66 kDa

Swiss-Prot:

Q9UGN5

Purification&Purity:

The antibody was affinity-purified from rabbit antiserum by affinity-chromatography using epitope-specific immunogen and the purity is > 95% (by SDS-PAGE).

Applications:

WB:1:1000~1:2000

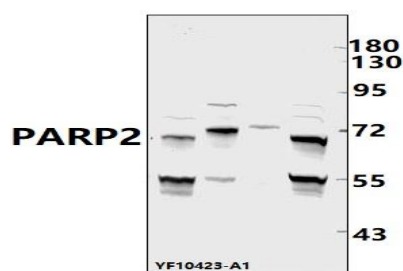
Storage&Stability:

Store at 4 °C short term. Aliquot and store at -20 °C long term. Avoid freeze-thaw cycles.

Specificity:

PARP2 polyclonal antibody detects endogenous levels of PARP2 protein.

DATA:



Western blot (WB) analysis of PARP2 pAb at 1:1000 dilution

Lane1:SHSY5Y whole cell lysate(40ug)

Lane2:U-87MG whole cell lysate(40ug)

Lane3:The heart tissue lysate of Rat(40ug)

Lane4:H9C2 whole cell lysate(40ug)

Note:

For research use only, not for use in diagnostic procedure.

Bioworld Technology, Inc.

Add: 1660 South Highway 100, Suite 500 St. Louis Park, MN 55416, USA.

Email: info@bioworld.com

Tel: 6123263284

Fax: 6122933841

Bioworld technology, co. Ltd.

Add: No 9, weidi road Qixia District Nanjing, 210046, P. R. China.

Email: info@biogot.com

Tel: 0086-025-68037686

Fax: 0086-025-68035151