

PAX6 polyclonal antibody

Catalog: BS91023

Host: Rabbit

Reactivity: Human, Mouse, Rat

BackGround:

Pax genes contain paired domains with strong homology to genes in *Drosophila* which are involved in programming early development. Lesions in the Pax-6 gene account for most cases of aniridia, a congenital malformation of the eye, chiefly characterized by iris hypoplasia, which can cause blindness. Pax-6 is involved in other anterior segment malformations besides aniridia, such as Peters anomaly, a major error in the embryonic development of the eye with corneal clouding with variable iridolenticulocorneal adhesions. The Pax-6 gene encodes a transcriptional regulator that recognizes target genes through its paired-type DNA-binding domain. The paired domain is composed of two distinct DNA-binding subdomains, the amino-terminal subdomain and the carboxy-terminal subdomain, which bind respective consensus DNA sequences. The human Pax-6 gene produces two alternatively spliced isoforms that have the distinct structure of the paired domain.

Product:

Rabbit IgG, 1mg/ml in PBS with 0.02% sodium azide, 50% glycerol, pH7.2

Molecular Weight:

47 kDa

Swiss-Prot:

P26367(Human) P63015(Mouse) P63016(Rat)

Purification&Purity:

ProA affinity purified

Applications:

WB:1:1,000-1:5,000

FC:1:50-1:100

IHC:1:50-1:200

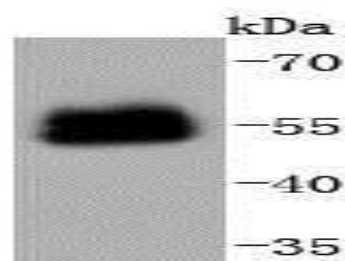
Storage&Stability:

Store at +4 °C after thawing. Aliquot store at -20 °C or -80 °C. Avoid repeated freeze / thaw cycles.

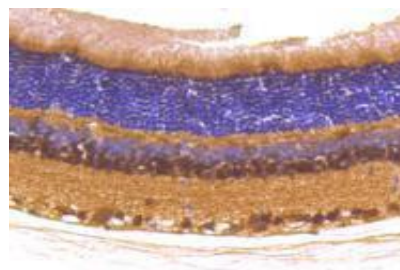
Specificity:

PAX6 polyclonal antibody detects endogenous levels of PAX6 protein.

DATA:



Western blot analysis of PAX6 on mouse eyes lysates using anti-PAX6 antibody at 1/1,000 dilution.



Immunohistochemical analysis of paraffin-embedded rat eyes tissue using anti-PAX6 antibody. Counter stained with hematoxylin.

Note:

For research use only, not for use in diagnostic procedure.

Bioworld Technology, Inc.

Add: 1660 South Highway 100, Suite 500 St. Louis Park, MN 55416, USA.

Email: info@bioworld.com

Tel: 6123263284

Fax: 6122933841

Bioworld technology, co. Ltd.

Add: No 9, weidi road Qixia District Nanjing, 210046, P. R. China.

Email: info@biogot.com

Tel: 0086-025-68037686

Fax: 0086-025-68035151