

Pax8 polyclonal antibody

Catalog: BS91026

Host: Rabbit

Reactivity: Human

BackGround:

The Pax family encodes transcription factors that function during embryogenesis and regulate the temporal and position-dependent differentiation of cells. Pax-8 is expressed in the developing and adult thyroid, the developing secretory system and at lower levels, in the adult kidney. Pax-8 complexes with TTF-1 and TTF-2 to induce thyroid follicular cell differentiation and thyroid hormone biosynthesis by regulating the expression of sodium iodide symporter (NIS), thyroid peroxidase (TPO), thyroglobulin (TG) and the thyrotropin receptor (TSHR). Treatment of FRTL-5 cells with TGF β 1 decreases Pax-8 mRNA levels and Pax-8 DNA binding activity, which suppresses the expression of TG and the formation of thyrocytes. Patients who have autosomal dominant mutations of the Pax-8 gene develop thyroid dysgenesis. The Pax-8 gene produces six isoforms, A to F, that are generated by alternative splicing and differ in their carboxy-terminal regions. The Pax-8 isoforms display different DNA binding capacities and are thought to be functionally distinct. The gene which encodes Pax-8 maps to human chromosome 2q12-q14.

Product:

Rabbit IgG, 1mg/ml in PBS with 0.02% sodium azide, 50% glycerol, pH7.2

Molecular Weight:

48 kDa

Swiss-Prot:

Q06710(Human)

Purification&Purity:

Peptide affinity purified.

Applications:

WB:1:500

ICC:1:50-1:200

IHC:1:50-1:200

FC:1:50-1:100

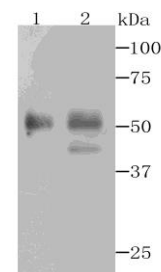
Storage&Stability:

Store at +4 °C after thawing. Aliquot store at -20 °C. Avoid repeated freeze / thaw cycles.

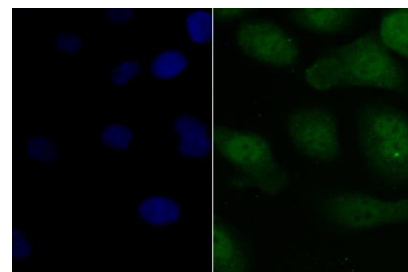
Specificity:

Pax8 polyclonal antibody detects endogenous levels of Pax8 protein.

DATA:



Western blot analysis of Pax8 on human thyroid gland tissue and SKOV-3 cell lysates using anti-Pax8 antibody at 1/500 dilution.



ICC staining Pax8 in SKOV-3 cells (green). The nuclear counter stain is DAPI (blue). Cells were fixed in paraformaldehyde, permeabilised with 0.25% Triton X100/PBS.

Note:

For research use only, not for use in diagnostic procedure.

Bioworld Technology, Inc.

Add: 1660 South Highway 100, Suite 500 St. Louis Park, MN 55416, USA.

Email: info@bioworld.com

Tel: 6123263284

Fax: 6122933841

Bioworld technology, co. Ltd.

Add: No 9, weidi road Qixia District Nanjing, 210046, P. R. China.

Email: info@biogot.com

Tel: 0086-025-68037686

Fax: 0086-025-68035151