

PBR polyclonal antibody

Catalog: BS91032

Host: Rabbit

Reactivity: Human, Mouse

BackGround:

Present mainly in the mitochondrial compartment of peripheral tissues, the protein encoded by this gene interacts with some benzodiazepines and has different affinities than its endogenous counterpart. Can bind protoporphyrin IX and may play a role in the transport of porphyrins and heme. Promotes the transport of cholesterol across mitochondrial membranes and may play a role in lipid metabolism, but its precise physiological role is controversial. It is apparently not required for steroid hormone biosynthesis. Was initially identified as peripheral-type benzodiazepine receptor; can also bind isoquinoline carboxamides. Alternatively spliced transcript variants have been reported; one of the variants lacks an internal exon and is considered non-coding, and the other variants encode the same protein.

Product:

Rabbit IgG, 1mg/ml in PBS with 0.02% sodium azide, 50% glycerol, pH7.2

Molecular Weight:

10/18 kDa

Swiss-Prot:

P30536(Human) P50637(Mouse)

Purification&Purity:

Protein affinity purified

Applications:

WB:1:500-1:2,000

IHC:1:50-1:200

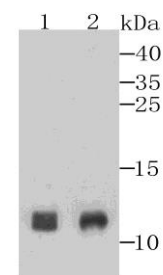
Storage&Stability:

Store at +4 °C after thawing. Aliquot store at -20 °C or -80 °C. Avoid repeated freeze / thaw cycles.

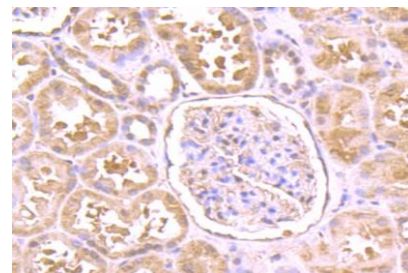
Specificity:

PBR polyclonal antibody detects endogenous levels of PBR protein.

DATA:



Western blot analysis of PBR on A431 and PC-3M cell lysates using anti-PBR antibody at 1/500 dilution.



Immunohistochemical analysis of paraffin-embedded human kidney tissue using anti-PBR antibody. Counter stained with hematoxylin.

Note:

For research use only, not for use in diagnostic procedure.

Bioworld Technology, Inc.

Add: 1660 South Highway 100, Suite 500 St. Louis Park, MN 55416, USA.

Email: info@bioworld.com

Tel: 6123263284

Fax: 6122933841

Bioworld technology, co. Ltd.

Add: No 9, weidi road Qixia District Nanjing, 210046, P. R. China.

Email: info@biogot.com

Tel: 0086-025-68037686

Fax: 0086-025-68035151