

## PDGFR $\alpha$ polyclonal antibody

Catalog: BS91039

Host: Rabbit

Reactivity: Human, Mouse, Rat

### BackGround:

Platelet-derived growth factor (PDGF) is a mitogen for mesenchyme- and glia-derived cells. PDGF consists of two chains, A and B, which dimerize to form functionally distinct isoforms, PDGF-AA, PDGF-AB and PDGF-BB. These three isoforms bind with different affinities to two receptor types, PDGFR- $\alpha$  and - $\beta$ , which are endowed with protein tyrosine kinase domains. PDGFR- $\alpha$  can bind to both A and B subunits of PDGF, while PDGFR- $\beta$  can only bind the B subunit. Ligand binding promotes either homo- or heterodimerization of the PDGF receptors in a specific manner. PDGF-AA induces the dimerization of two  $\alpha$  receptors, PDGF-AB induces dimerization of  $\alpha\alpha$  and  $\alpha\beta$  and PDGF-BB induces the formation of three types of dimers,  $\alpha\alpha$ ,  $\alpha\beta$  and  $\beta\beta$ . Translocation of the PDGFR- $\beta$  gene with the Tel gene is linked to chronic myelomonocytic leukemia (CMML), a myelodysplastic syndrome, and demonstrates the oncogenic potential of the PDGF receptors.

### Product:

Rabbit IgG, 1mg/ml in PBS with 0.02% sodium azide, 50% glycerol, pH7.2

### Molecular Weight:

123 kDa

### Swiss-Prot:

P16234(Human) P26618(Mouse) P20786(Rat)

### Purification&Purity:

ProA affinity purified

### Applications:

WB:1:1,000-1:5,000

ICC:1:50-1:200

IHC:1:50-1:200

FC:1:50-1:100

### Storage&Stability:

Store at +4 °C after thawing. Aliquot store at -20 °C or -80 °C. Avoid repeated freeze / thaw cycles.

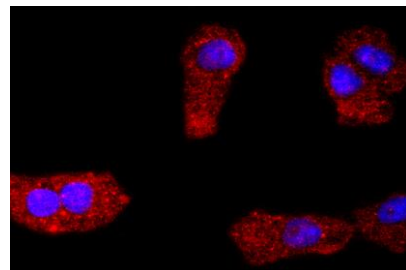
### Specificity:

PDGFR $\alpha$  polyclonal antibody detects endogenous levels of PDGFR $\alpha$  protein.

### DATA:



Western blot analysis of PDGFR alpha on NIH/3T3 cells lysates using anti-PDGFR alpha antibody at 1/1,000 dilution.



ICC staining PDGFR alpha in A549 cells (red). The nuclear counter stain is DAPI (blue). Cells were fixed in paraformaldehyde, permeabilised with 0.25% Triton X100/PBS.

### Note:

For research use only, not for use in diagnostic procedure.

### Bioworld Technology, Inc.

Add: 1660 South Highway 100, Suite 500 St. Louis Park, MN 55416, USA.

Email: [info@bioworld.com](mailto:info@bioworld.com)

Tel: 6123263284

Fax: 6122933841

### Bioworld technology, co. Ltd.

Add: No 9, weidi road Qixia District Nanjing, 210046, P. R. China.

Email: [info@biogot.com](mailto:info@biogot.com)

Tel: 0086-025-68037686

Fax: 0086-025-68035151