

## PDHA1 polyclonal antibody

Catalog: BS91040

Host: Rabbit

Reactivity: Human, Mouse, Rat

### BackGround:

The pyruvate dehydrogenase (PDH) complex is a nuclear-encoded mitochondrial matrix enzyme complex that functions as the primary link between glycolysis and the tricarboxylic acid (TCA) cycle by catalyzing the irreversible conversion of pyruvate into acetyl-CoA. The E1 enzyme of the PDH complex is made up of a heterotetramer of two  $\alpha$  and two  $\beta$  subunits. The E1- $\alpha$  subunit (PDH-E1 $\alpha$ ) contains the E1 active site and plays a key role in the function of the PDH complex. The PDH complex is regulated by phosphorylation and dephosphorylation of PDH-E1 $\alpha$ . The gene encoding for PDH-E1 $\alpha$  maps to chromosome Xp22.12, and a 20bp deletion in the last exon of this gene is sufficient to cause PDH deficiency, which causes a broad range of symptoms including the development of seizures, mental retardation and spasticity, as well as intermittent episodes of lactic acidosis associated with cerebellar ataxia.

### Product:

Rabbit IgG, 1mg/ml in PBS with 0.02% sodium azide, 50% glycerol, pH7.2

### Molecular Weight:

43 kDa

### Swiss-Prot:

P08559(Human) P35486(Mouse) P26284(Rat)

### Purification&Purity:

ProA affinity purified

### Applications:

WB:1:1,000-1:5,000

ICC:1:50-1:200

IHC:1:50-1:200

FC:1:50-1:100

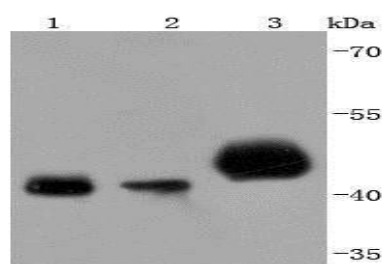
### Storage&Stability:

Store at +4 °C after thawing. Aliquot store at -20 °C or -80 °C. Avoid repeated freeze / thaw cycles.

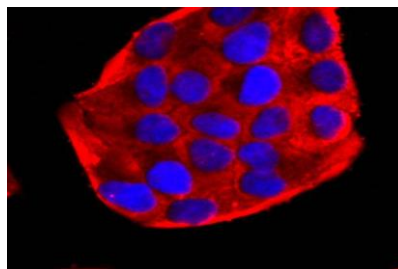
### Specificity:

PDHA1 polyclonal antibody detects endogenous levels of PDHA1 protein.

### DATA:



Western blot analysis of PDHA1 on different lysates using anti-PDHA1 antibody at 1/1,000 dilution. Positive control: Lane 1: 293T Lane 2: A431 Lane 3: Mouse heart



ICC staining PDHA1 in HeLa cells (red). The nuclear counter stain is DAPI (blue). Cells were fixed in paraformaldehyde, permeabilised with 0.25% Triton X100/PBS.

### Note:

For research use only, not for use in diagnostic procedure.

### Bioworld Technology, Inc.

Add: 1660 South Highway 100, Suite 500 St. Louis Park, MN 55416, USA.

Email: [info@bioworld.com](mailto:info@bioworld.com)

Tel: 6123263284

Fax: 6122933841

### Bioworld technology, co. Ltd.

Add: No 9, weidi road Qixia District Nanjing, 210046, P. R. China.

Email: [info@biogot.com](mailto:info@biogot.com)

Tel: 0086-025-68037686

Fax: 0086-025-68035151