

PDI polyclonal antibody

Catalog: BS91042

Host: Rabbit

Reactivity: Human, mouse, rat

BackGround:

Protein disulfide isomerase or PDI is an enzyme in the endoplasmic reticulum in eukaryotes that catalyzes the formation and breakage of disulfide bonds between cysteine residues within proteins as they fold. Another major function of PDI relates to its activity as a chaperone; i.e., it aids wrongly folded proteins to reach a correctly folded state without the aid of enzymatic disulfide shuffling. PDI has been found to be involved in the breaking of bonds on the HIV gp120 protein during HIV infection of CD4 positive cells, and is required for HIV infection of lymphocytes and monocytes.

Product:

Rabbit IgG, 1mg/ml in PBS with 0.02% sodium azide, 50% glycerol, pH7.2

Molecular Weight:

58 kDa

Swiss-Prot:

Q13087

Purification&Purity:

Peptide affinity purified

Applications:

WB:1:500-1:1,000

ICC:1:200

IHC:1:200

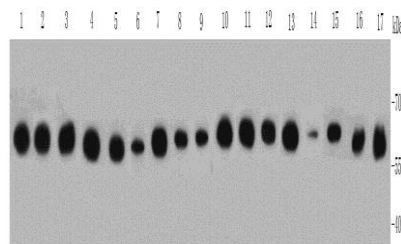
Storage&Stability:

Store at +4 °C after thawing. Aliquot store at -20 °C or -80 °C. Avoid repeated freeze / thaw cycles.

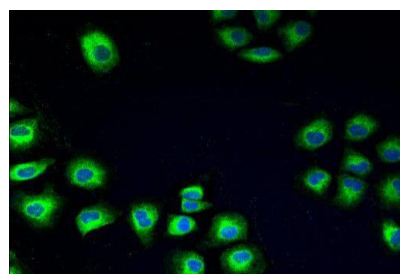
Specificity:

PDI polyclonal antibody detects endogenous levels of PDI protein.

DATA:



Western blot analysis of PDI on different cell lysates using anti-PDI antibody at 1/1000 dilution. Positive control: Lane 1: HeLa Lane 2: MCF-7 Lane 3: PANC Lane 4: HepG2 Lane 5: HUVEC Lane 6: NIH/3T3 Lane 7: L929 Lane 8: F9 Lane 9: Jurkat Lane 10: A431 Lane 11: A549 Lane 12: Mouse liver Lane 13: Mouse kidney Lane 14: Mouse brain Lane 15: Human kidney Lane 16: Human brain Lane 17: Human liver



ICC staining PDI in HUVEC cells (green). The nuclear counter stain is DAPI (blue). Cells were fixed in paraformaldehyde, permeabilised with 0.25% Triton X100/PBS.

Note:

For research use only, not for use in diagnostic procedure.

Bioworld Technology, Inc.

Add: 1660 South Highway 100, Suite 500 St. Louis Park, MN 55416, USA.

Email: info@bioworld.com

Tel: 6123263284

Fax: 6122933841

Bioworld technology, co. Ltd.

Add: No 9, weidi road Qixia District Nanjing, 210046, P. R. China.

Email: info@biogot.com

Tel: 0086-025-68037686

Fax: 0086-025-68035151